



**Water Monitoring Result at C7 - Windsor House  
Mid-Flood Tide**

Date	Time	Weather Condition	Sampling Depth m	Water Temperature °C			pH			Salinity ppt			DO Saturation %		DO mg/L		Turbidity NTU		Suspended Solids mg/L					
				Value	Average		Value	Average		Value	Average		Value	Average	Value	Average	Value	Average	Value	Average				
28/2/18	15:13	Fine	Middle	-	20.50	20.50	20.65	8.05	8.05	8.05	31.55	31.55	31.54	84.7	85.0	84.9	6.33	6.35	6.34	8.00	8.00	8.01	10	9.00
	15:15		Middle	-	20.80	20.80		8.05	8.05		31.53	31.53		84.7	85.0		6.32	6.34		8.01	8.02		8	
2/3/18	16:31	Cloudy	Middle	-	19.60	19.60	19.60	8.01	8.01	8.01	31.88	31.88	31.88	79.6	80.7	80.2	6.03	6.12	6.07	1.42	1.47	1.49	7	8.00
	16:32		Middle	-	19.60	19.60		8.01	8.01		31.88	31.88		80.8	79.6		6.11	6.02		1.53	1.55		9	
5/3/18	8:35	Fine	Middle	-	19.80	19.80	19.85	8.03	8.03	8.03	31.05	31.05	31.05	78.5	78.8	78.8	5.96	5.98	5.99	2.36	2.36	2.36	4	4.00
	8:37		Middle	-	19.90	19.90		8.03	8.03		31.04	31.04		79.1	78.9		6.01	5.99		2.36	2.34		4	
7/3/18	8:20	Fine	Middle	-	19.00	19.00	19.00	8.06	8.06	8.06	31.35	31.35	31.35	79.4	79.4	79.4	6.12	6.12	6.12	2.66	2.64	2.64	<2	<2
	8:22		Middle	-	19.00	19.00		8.06	8.06		31.35	31.35		79.3	79.3		6.11	6.11		2.62	2.62		<2	
9/3/18	10:50	Fine	Middle	-	17.90	17.90	17.85	8.12	8.12	8.12	31.17	31.17	31.17	82.5	82.6	82.8	6.50	6.51	6.52	2.65	2.64	2.62	<2	<2
	10:52		Middle	-	17.80	17.80		8.11	8.11		31.16	31.16		82.9	83.0		6.53	6.54		2.62	2.57		<2	
12/3/18	11:45	Fine	Middle	-	19.50	19.50	19.70	8.20	8.20	8.20	31.57	31.57	31.56	87.3	86.8	86.8	6.62	6.59	6.58	2.36	2.35	2.34	7	6.50
	11:47		Middle	-	19.90	19.90		8.19	8.19		31.54	31.54		86.8	86.2		6.57	6.52		2.32	2.31		6	
14/3/18	16:30	Cloudy	Middle	-	19.10	19.10	19.20	8.13	8.13	8.15	31.93	31.93	31.93	79.9	79.8	79.6	6.11	6.10	6.09	4.37	4.46	4.36	2	2.00
	16:32		Middle	-	19.30	19.30		8.16	8.16		31.93	31.93		79.7	79.0		6.09	6.04		4.32	4.29		2	
16/3/18	16:35	Fine	Middle	-	20.90	20.90	21.00	8.06	8.06	8.06	31.16	31.16	31.15	82.5	82.8	82.7	6.13	6.15	6.15	3.98	3.99	3.99	8	8.00
	16:37		Middle	-	21.10	21.10		8.05	8.05		31.14	31.14		82.7	82.9		6.14	6.16		3.99	3.99		8	
19/3/18	7:40	Cloudy	Middle	-	20.00	20.00	20.10	8.09	8.09	8.09	31.46	31.46	31.46	79.8	80.0	79.4	6.00	6.02	5.97	3.00	2.97	2.89	3	3.00
	7:42		Middle	-	20.20	20.20		8.09	8.09		31.45	31.45		78.8	79.1		5.92	5.95		2.82	2.78		3	
21/3/18	9:46	Fine	Middle	-	20.10	20.10	20.10	8.12	8.12	8.12	31.32	31.32	31.32	80.4	80.5	80.4	6.06	6.07	6.06	4.49	4.39	4.43	3	3.00
	9:47		Middle	-	20.10	20.10		8.12	8.12		31.32	31.32		80.6	80.1		6.08	6.04		4.40	4.42		3	
23/3/18	10:45	Fine	Middle	-	20.60	20.60	20.65	8.12	8.12	8.12	31.61	31.61	31.61	81.5	81.7	81.3	6.08	6.09	6.06	5.19	5.18	5.17	7	6.50
	10:47		Middle	-	20.70	20.70		8.12	8.12		31.60	31.60		80.9	81.2		6.03	6.05		5.15	5.14		6	
26/3/18	13:10	Fine	Middle	-	23.10	23.10	23.25	8.13	8.13	8.12	31.81	31.81	31.81	84.3	84.5	84.4	5.99	5.99	5.99	3.57	3.52	3.51	3	3.50
	13:12		Middle	-	23.40	23.40		8.11	8.11		31.80	31.80		84.4	84.3		5.99	5.98		3.47	3.48		4	

Remarks:  
Single underline denotes exceedance over Action Level.  
Double underline denotes exceedance over Limit Level.



**Water Monitoring Result at C1 - HKCEC Extension  
Mid-Flood Tide**

Date	Time	Weather Condition	Sampling Depth	m	Water Temperature			pH			Salinity			DO Saturation			DO		Turbidity		Suspended Solids			
					°C			-			ppt			%			mg/L		NTU		mg/L			
					Value	Average		Value	Average		Value	Average		Value	Average		Value	Average	Value	Average	Value	Average	Value	Average
28/2/18	17:25	Fine	Middle	3.0	18.20	18.20	18.25	8.11	8.11	8.12	31.76	31.76	31.76	81.6	81.8	81.9	6.36	6.37	6.37	2.87	2.84	2.87	4	4.00
	17:27		Middle	3.0	18.30	18.30		8.12	8.12		31.75	31.75		81.9	82.1		6.37	6.39		2.86	2.91		4	
2/3/18	17:25	Cloudy	Middle	2.5	19.30	19.30	19.30	8.10	8.10	8.10	31.91	31.91	31.91	81.3	83.6	82.6	6.20	6.37	6.29	1.80	1.77	1.72	7	6.50
	17:26		Middle	2.5	19.30	19.30		8.10	8.10		31.91	31.91		82.6	82.8		6.29	6.31		1.65	1.66		6	
5/3/18	10:50	Fine	Middle	3.0	20.10	20.10	20.15	8.14	8.14	8.14	31.36	31.36	31.36	80.0	80.3	80.3	6.03	6.05	6.05	2.58	2.59	2.61	2	2.50
	10:52		Middle	3.0	20.20	20.20		8.14	8.14		31.36	31.36		80.3	80.6		6.05	6.07		2.62	2.63		3	
7/3/18	10:15	Fine	Middle	2.5	18.00	18.00	18.00	8.19	8.19	8.19	31.53	31.53	31.54	85.5	85.4	85.3	6.70	6.69	6.69	3.82	3.97	3.84	5	5.50
	10:17		Middle	2.5	18.00	18.00		8.19	8.19		31.54	31.54		85.2	85.2		6.69	6.69		3.78	3.79		6	
9/3/18	10:20	Fine	Middle	3.0	16.90	16.90	16.90	8.20	8.20	8.20	31.52	31.52	31.52	86.8	86.6	86.6	6.95	6.93	6.94	2.33	2.34	2.34	2	2.00
	10:22		Middle	3.0	16.90	16.90		8.20	8.20		31.52	31.52		86.3	86.5		6.92	6.94		2.35	2.35		2	
12/3/18	14:40	Fine	Middle	3.0	18.80	18.80	18.85	8.24	8.24	8.24	31.72	31.72	31.72	87.4	87.1	87.4	6.73	6.70	6.73	2.96	2.95	2.64	5	4.00
	14:42		Middle	3.0	18.90	18.90		8.24	8.24		31.72	31.72		87.6	87.6		6.74	6.74		2.32	2.31		3	
14/3/18	15:50	Cloudy	Middle	3.0	18.80	18.80	18.80	8.22	8.22	8.22	32.06	32.06	32.06	75.1	75.0	75.1	5.78	5.77	5.78	4.98	5.01	5.00	<2	<2
	15:52		Middle	3.0	18.80	18.80		8.22	8.22		32.06	32.06		75.2	75.2		5.78	5.78		5.01	5.00		<2	
16/3/18	16:00	Fine	Middle	2.5	20.20	20.20	20.20	8.17	8.17	8.17	31.18	31.18	31.20	87.6	87.9	87.8	6.60	6.62	6.61	4.67	4.58	4.57	7	6.50
	16:02		Middle	2.5	20.20	20.20		8.17	8.17		31.21	31.21		87.6	87.9		6.59	6.61		4.52	4.49		6	
19/3/18	9:35	Cloudy	Middle	3.0	19.70	19.70	19.75	8.21	8.21	8.21	31.72	31.72	31.72	83.8	84.0	84.1	6.36	6.37	6.37	6.24	6.25	6.25	8	8.00
	9:37		Middle	3.0	19.80	19.80		8.21	8.21		31.72	31.72		84.1	84.3		6.37	6.38		6.25	6.25		8	
21/3/18	8:20	Fine	Middle	3.0	18.90	18.90	18.85	8.19	8.19	8.19	31.38	31.38	31.39	84.9	85.2	85.0	6.56	6.58	6.57	7.90	7.90	7.90	5	5.00
	8:22		Middle	3.0	18.80	18.80		8.19	8.19		31.39	31.39		84.9	84.9		6.56	6.56		7.91	7.90		5	
23/3/18	9:40	Fine	Middle	3.0	19.70	19.70	19.70	8.15	8.15	8.15	31.65	31.65	31.65	83.8	84.6	84.4	6.36	6.42	6.41	7.27	7.22	7.24	9	8.50
	9:42		Middle	3.0	19.70	19.70		8.15	8.15		31.65	31.65		84.4	84.9		6.41	6.44		7.21	7.26		8	
26/3/18	11:40	Fine	Middle	3.0	21.10	21.10	21.10	8.18	8.18	8.18	31.93	31.93	31.93	83.4	83.6	83.3	6.15	6.17	6.15	5.37	5.30	5.36	3	2.50
	11:42		Middle	3.0	21.10	21.10		8.18	8.18		31.93	31.93		83.1	83.0		6.13	6.13		5.39	5.39		2	

Remarks:  
Single underline denotes exceedance over Action Level.  
Double underline denotes exceedance over Limit Level.



**Water Monitoring Result at P1 - HKCEC Phase I  
Mid-Flood Tide**

Date	Time	Weather Condition	Sampling Depth m	Water Temperature °C			pH			Salinity ppt			DO Saturation %			DO mg/L			Turbidity NTU			Suspended Solids mg/L		
				Value	Average		Value	Average		Value	Average		Value	Average		Value	Average		Value	Average		Value	Average	
28/2/18	17:05	Fine	Middle	3.0	20.10	20.10	20.20	8.09	8.09	8.09	31.78	31.78	31.78	84.9	85.3	85.3	6.38	6.41	6.41	3.13	3.11	3.15	4	4.00
	17:07		Middle	3.0	20.30	20.30		8.09	8.09		31.77	31.77		85.4	85.4		6.42	6.41		3.16	3.18		4	
2/3/18	17:03	Cloudy	Middle	2.5	19.60	19.60	19.60	8.15	8.15	8.15	32.09	32.09	32.09	82.8	81.5	82.2	6.27	6.18	6.23	1.84	1.90	1.83	4	3.50
	17:04		Middle	2.5	19.60	19.60		8.15	8.15		32.09	32.09		82.4	82.0		6.24	6.21		1.77	1.79		3	
5/3/18	10:30	Fine	Middle	3.0	21.40	21.40	21.50	8.16	8.16	8.17	31.06	31.06	31.06	86.1	86.2	86.4	6.35	6.35	6.36	3.67	3.68	3.66	4	5.00
	10:32		Middle	3.0	21.60	21.60		8.17	8.17		31.06	31.06		86.9	86.3		6.40	6.35		3.67	3.63		6	
7/3/18	9:55	Fine	Middle	2.5	18.30	18.30	18.35	8.17	8.17	8.17	31.45	31.45	31.45	85.3	85.4	85.4	6.64	6.65	6.65	2.87	2.91	3.05	3	3.50
	9:57		Middle	2.5	18.40	18.40		8.16	8.16		31.45	31.45		85.4	85.3		6.65	6.64		3.17	3.26		4	
9/3/18	10:00	Fine	Middle	3.0	17.00	17.00	17.00	8.04	8.04	8.06	31.73	31.73	31.73	88.2	88.6	88.4	7.04	7.07	7.05	2.94	2.96	2.98	4	3.50
	10:02		Middle	3.0	17.00	17.00		8.07	8.07		31.72	31.72		88.5	88.3		7.05	7.05		2.99	3.01		3	
12/3/18	14:20	Fine	Middle	3.0	20.00	20.00	20.10	8.18	8.18	8.19	31.76	31.76	31.76	92.3	91.9	91.8	6.94	6.90	6.89	3.99	3.99	4.02	5	4.50
	14:22		Middle	3.0	20.20	20.20		8.20	8.20		31.76	31.76		91.4	91.4		6.86	6.86		4.04	4.05		4	
14/3/18	15:30	Cloudy	Middle	3.0	19.00	19.00	19.00	8.14	8.14	8.15	32.19	32.19	32.19	77.4	77.4	77.1	5.92	5.92	5.90	4.17	4.21	4.21	2	2.50
	15:32		Middle	3.0	19.00	19.00		8.16	8.16		32.19	32.19		76.8	76.8		5.87	5.88		4.22	4.22		3	
16/3/18	15:40	Fine	Middle	2.5	21.40	21.40	21.50	8.09	8.09	8.10	31.31	31.31	31.32	88.9	89.2	88.9	6.53	6.55	6.53	5.01	4.96	4.92	7	6.50
	15:42		Middle	2.5	21.60	21.60		8.10	8.10		31.32	31.32		88.6	88.9		6.50	6.52		4.86	4.86		6	
19/3/18	9:15	Cloudy	Middle	3.0	20.30	20.30	20.35	8.17	8.17	8.17	31.34	31.34	31.34	84.3	84.5	83.9	6.34	6.34	6.30	5.68	5.67	5.67	5	4.50
	9:17		Middle	3.0	20.40	20.40		8.17	8.17		31.34	31.34		83.3	83.5		6.25	6.27		5.66	5.68		4	
21/3/18	8:00	Fine	Middle	3.0	19.00	19.00	19.00	8.09	8.09	8.11	31.44	31.44	31.45	85.2	85.4	84.9	6.55	6.57	6.53	7.28	7.20	7.19	4	4.00
	8:02		Middle	3.0	19.00	19.00		8.12	8.12		31.45	31.45		84.6	84.4		6.50	6.49		7.14	7.15		4	
23/3/18	9:20	Fine	Middle	3.0	20.60	20.60	20.65	7.94	7.94	7.97	32.17	32.17	32.17	86.5	86.4	86.6	6.43	6.41	6.43	6.19	6.10	6.10	9	8.50
	9:22		Middle	3.0	20.70	20.70		8.00	8.00		32.17	32.17		86.5	86.9		6.42	6.45		6.08	6.03		8	
26/3/18	11:15	Fine	Middle	3.0	21.60	21.60	21.65	8.16	8.16	8.17	31.92	31.92	31.92	84.1	83.9	83.7	6.15	6.13	6.11	5.50	5.40	5.43	3	2.50
	11:17		Middle	3.0	21.70	21.70		8.17	8.17		31.92	31.92		83.4	83.3		6.09	6.08		5.40	5.41		2	

Remarks:  
Single underline denotes exceedance over Action Level.  
Double underline denotes exceedance over Limit Level.



**Water Monitoring Result at P3 - APA  
Mid-Flood Tide**

Date	Time	Weather Condition	Sampling Depth	m	Water Temperature			pH			Salinity			DO Saturation		DO		Turbidity		Suspended Solids				
					°C			-			ppt			%		mg/L		NTU		mg/L				
					Value	Average		Value	Average		Value	Average		Value	Average		Value	Average		Value	Average	Value	Average	
28/2/18	17:10	Fine	Middle	3.0	18.80	18.80	18.90	8.11	8.11	8.11	31.76	31.76	31.76	82.2	82.4	82.4	6.33	6.34	6.34	3.22	3.24	3.24	5	4.00
	17:12		Middle	3.0	19.00	19.00		8.11	8.11		31.75	31.75		82.6	82.3		6.35	6.33		3.25	3.25		3	
2/3/18	17:07	Cloudy	Middle	2.5	19.50	19.50	19.50	8.11	8.11	8.11	32.05	32.05	32.05	82.6	83.0	83.8	6.27	6.30	6.29	1.88	1.92	1.90	4	3.50
	17:08		Middle	2.5	19.50	19.50		8.11	8.11		32.05	32.05		83.9	85.5		6.27	6.33		1.96	1.82		3	
5/3/18	10:35	Fine	Middle	3.0	20.50	20.50	20.55	8.17	8.17	8.17	31.06	31.06	31.06	84.1	84.2	84.1	6.30	6.31	6.30	3.22	3.25	3.17	4	4.00
	10:37		Middle	3.0	20.60	20.60		8.17	8.17		31.05	31.05		84.1	84.1		6.30	6.30		3.11	3.09		4	
7/3/18	10:00	Fine	Middle	2.5	18.20	18.20	18.20	8.16	8.16	8.16	31.43	31.43	31.43	86.1	85.9	86.1	6.72	6.71	6.72	1.81	1.81	1.82	2	2.00
	10:02		Middle	2.5	18.20	18.20		8.16	8.16		31.43	31.43		86.1	86.1		6.72	6.72		1.82	1.83		2	
9/3/18	10:05	Fine	Middle	3.0	16.60	16.60	16.60	8.11	8.11	8.12	31.61	31.61	31.62	87.0	87.0	87.0	7.01	7.01	7.01	2.12	2.06	1.98	6	5.00
	10:07		Middle	3.0	16.60	16.60		8.13	8.13		31.62	31.62		87.0	87.0		7.01	7.00		1.89	1.86		4	
12/3/18	14:25	Fine	Middle	3.0	18.80	18.80	18.90	8.22	8.22	8.22	31.73	31.73	31.73	89.4	89.4	89.2	6.88	6.88	6.86	4.22	4.29	4.31	5	4.50
	14:27		Middle	3.0	19.00	19.00		8.22	8.22		31.73	31.73		89.4	88.6		6.86	6.80		4.37	4.37		4	
14/3/18	15:35	Cloudy	Middle	3.0	18.80	18.80	18.80	8.20	8.20	8.20	32.17	32.17	32.17	76.3	76.0	76.3	5.86	5.85	5.87	4.20	4.16	4.12	3	2.50
	15:37		Middle	3.0	18.80	18.80		8.20	8.20		32.17	32.17		76.7	76.3		5.89	5.87		4.07	4.06		2	
16/3/18	15:45	Fine	Middle	2.5	20.50	20.50	20.60	8.13	8.13	8.14	31.24	31.24	31.24	89.3	88.9	88.7	6.68	6.65	6.63	4.51	4.60	4.60	6	6.50
	15:47		Middle	2.5	20.70	20.70		8.14	8.14		31.23	31.23		88.3	88.4		6.59	6.60		4.64	4.66		7	
19/3/18	9:20	Cloudy	Middle	3.0	19.80	19.80	19.85	8.18	8.18	8.18	31.37	31.37	31.37	83.3	84.0	83.6	6.31	6.36	6.34	5.76	5.70	5.69	6	5.50
	9:22		Middle	3.0	19.90	19.90		8.18	8.18		31.36	31.36		83.5	83.5		6.35	6.33		5.62	5.68		5	
21/3/18	8:05	Fine	Middle	3.0	18.80	18.80	18.80	8.15	8.15	8.16	31.29	31.29	31.30	81.5	81.5	81.8	6.30	6.30	6.32	6.16	6.15	6.15	2	3.00
	8:07		Middle	3.0	18.80	18.80		8.16	8.16		31.30	31.30		82.2	82.1		6.35	6.34		6.15	6.15		4	
23/3/18	9:25	Fine	Middle	3.0	19.60	19.60	19.65	8.07	8.07	8.08	31.66	31.66	31.66	83.2	83.1	82.7	6.32	6.31	6.28	6.38	6.39	6.37	6	6.00
	9:27		Middle	3.0	19.70	19.70		8.08	8.08		31.66	31.66		82.0	82.4		6.22	6.25		6.32	6.40		6	
26/3/18	11:20	Fine	Middle	3.0	20.90	20.90	21.00	8.18	8.18	8.18	31.90	31.90	31.90	87.2	87.3	87.2	6.45	6.45	6.44	5.02	5.05	5.05	2	2.50
	11:22		Middle	3.0	21.10	21.10		8.18	8.18		31.90	31.90		87.0	87.2		6.42	6.44		5.06	5.06		3	

Remarks:  
Single underline denotes exceedance over Action Level.  
Double underline denotes exceedance over Limit Level.



**Water Monitoring Result at P4 - SOC  
Mid-Flood Tide**

Date	Time	Weather Condition	Sampling Depth m	Water Temperature °C			pH			Salinity ppt			DO Saturation %			DO mg/L		Turbidity NTU			Suspended Solids mg/L			
				Value	Average		Value	Average		Value	Average		Value	Average		Value	Average	Value	Average	Value	Average	Value	Average	
28/2/18	17:15	Fine	Middle	3.0	18.40	18.40	18.45	8.11	8.11	8.11	31.76	31.76	31.76	82.2	82.0	82.1	6.38	6.36	6.37	3.62	3.64	3.57	6	5.00
	17:17		Middle	3.0	18.50	18.50		8.11	8.11		31.76	31.76		82.1	82.2		6.37	6.37		3.53	3.50		4	
2/3/18	17:14	Cloudy	Middle	2.5	19.60	19.60	19.60	8.10	8.10	8.10	32.03	32.03	32.03	83.6	84.6	84.1	6.34	6.41	6.38	1.44	1.51	1.42	2	2.50
	17:15		Middle	2.5	19.60	19.60		8.10	8.10		32.03	32.03		84.3	84.0		6.39	6.36		1.37	1.35		3	
5/3/18	10:40	Fine	Middle	3.0	20.20	20.20	20.30	8.15	8.15	8.15	31.24	31.24	31.24	82.1	82.3	82.4	6.18	6.19	6.20	2.86	2.83	2.88	5	5.00
	10:42		Middle	3.0	20.40	20.40		8.15	8.15		31.23	31.23		82.5	82.7		6.20	6.21		2.91	2.93		5	
7/3/18	10:05	Fine	Middle	2.5	28.10	28.10	23.10	8.17	8.17	8.17	31.49	31.49	31.49	85.2	85.2	85.5	6.67	6.67	6.69	3.91	3.94	3.90	3	3.50
	10:07		Middle	2.5	18.10	18.10		8.17	8.17		31.48	31.48		85.8	85.8		6.71	6.71		3.89	3.86		4	
9/3/18	10:10	Fine	Middle	3.0	16.90	16.90	16.90	8.16	8.16	8.17	31.60	31.60	31.60	85.3	85.6	85.5	6.83	6.85	6.85	2.96	2.96	2.96	2	2.00
	10:12		Middle	3.0	16.90	16.90		8.17	8.17		31.60	31.60		85.9	85.2		6.88	6.82		2.95	2.95		2	
12/3/18	14:30	Fine	Middle	3.0	18.80	18.80	18.85	8.22	8.22	8.22	31.66	31.66	31.67	87.6	88.0	87.9	6.75	6.78	6.77	2.82	2.78	2.80	5	4.50
	14:32		Middle	3.0	18.90	18.90		8.22	8.22		31.67	31.67		88.2	87.8		6.78	6.76		2.71	2.69		4	
14/3/18	15:40	Cloudy	Middle	3.0	18.70	18.70	18.75	8.22	8.22	8.23	32.16	32.16	32.16	77.9	78.0	78.0	6.00	6.01	6.00	4.46	4.48	4.45	3	2.50
	15:42		Middle	3.0	18.80	18.80		8.23	8.23		32.16	32.16		78.2	77.7		6.02	5.98		4.43	4.43		2	
16/3/18	15:50	Fine	Middle	2.5	20.30	20.30	20.35	8.15	8.15	8.16	31.23	31.23	31.23	88.4	88.4	88.4	6.64	6.64	6.64	5.43	5.42	5.41	6	6.50
	15:52		Middle	2.5	20.40	20.40		8.16	8.16		31.23	31.23		88.5	88.3		6.64	6.63		5.40	5.39		7	
19/3/18	9:25	Cloudy	Middle	3.0	19.80	19.80	19.85	8.17	8.17	8.17	31.39	31.39	31.39	82.4	82.4	82.3	6.24	6.24	6.23	4.72	4.70	4.69	6	5.00
	9:27		Middle	3.0	19.90	19.90		8.17	8.17		31.39	31.39		81.9	82.3		6.19	6.23		4.68	4.67		4	
21/3/18	8:10	Fine	Middle	3.0	18.90	18.90	18.90	8.17	8.17	8.18	31.35	31.35	31.35	79.7	80.6	80.8	6.15	6.22	6.24	7.17	7.19	7.15	4	4.50
	8:12		Middle	3.0	18.90	18.90		8.18	8.18		31.35	31.35		81.4	81.5		6.28	6.29		7.11	7.11		5	
23/3/18	9:30	Fine	Middle	3.0	19.60	19.60	19.60	8.11	8.11	8.12	31.63	31.63	31.63	82.2	82.4	82.2	6.25	6.26	6.25	6.85	6.89	6.88	7	7.00
	9:32		Middle	3.0	19.60	19.60		8.12	8.12		31.63	31.63		81.8	82.4		6.21	6.26		6.87	6.89		7	
26/3/18	11:25	Fine	Middle	3.0	20.80	20.80	20.85	8.18	8.18	8.18	31.89	31.89	31.89	85.7	86.0	86.0	6.35	6.37	6.37	5.70	5.80	5.75	2	2.50
	11:27		Middle	3.0	20.90	20.90		8.18	8.18		31.88	31.88		86.1	86.1		6.38	6.38		5.78	5.73		3	

Remarks:  
Single underline denotes exceedance over Action Level.  
Double underline denotes exceedance over Limit Level.



**Water Monitoring Result at P5 - WCT / RT / IT  
Mid-Flood Tide**

Date	Time	Weather Condition	Sampling Depth	Water Temperature		pH		Salinity		DO Saturation		DO		Turbidity		Suspended Solids								
				°C		-		ppt		%		mg/L		NTU		mg/L								
				Value	Average	Value	Average	Value	Average	Value	Average	Value	Average	Value	Average	Value	Average							
28/2/18	17:20	Fine	Middle	3.0	18.30	18.30	18.35	8.11	8.11	8.12	31.76	31.78	31.77	80.3	80.4	80.5	6.25	6.26	6.26	3.53	3.53	3.53	4	4.00
	17:22		Middle	3.0	18.40	18.40	18.35	8.12	8.12	8.12	31.76	31.77	31.77	80.7	80.5	80.5	6.27	6.26	6.26	3.52	3.53	3.53	4	
2/3/18	17:21	Cloudy	Middle	2.5	19.60	19.60	19.60	8.10	8.10	8.10	31.89	31.89	31.89	80.8	78.8	80.5	6.08	5.98	6.10	1.33	1.30	1.29	10	6.50
	17:22		Middle	2.5	19.60	19.60	19.60	8.10	8.10	8.10	31.89	31.89	31.89	81.5	81.0	80.5	6.19	6.16	6.10	1.28	1.26	1.29	3	
5/3/18	10:45	Fine	Middle	3.0	20.10	20.10	20.15	8.14	8.14	8.14	31.36	31.36	31.36	80.3	80.8	80.7	6.05	6.09	6.09	2.60	2.63	2.68	5	4.50
	10:47		Middle	3.0	20.20	20.20	20.15	8.14	8.14	8.14	31.35	31.35	31.36	80.6	81.2	80.7	6.07	6.13	6.09	2.73	2.77	2.68	4	
7/3/18	10:10	Fine	Middle	2.5	18.00	18.00	18.00	8.18	8.18	8.18	31.52	31.52	31.52	86.7	86.9	86.9	6.79	6.81	6.81	4.05	4.03	4.02	2	2.50
	10:12		Middle	2.5	18.00	18.00	18.00	8.18	8.18	8.18	31.51	31.51	31.52	86.9	87.0	86.9	6.81	6.81	6.81	4.01	4.00	4.02	3	
9/3/18	10:15	Fine	Middle	3.0	16.90	16.90	16.90	8.18	8.18	8.19	31.58	31.58	31.58	84.3	83.9	83.7	6.75	6.71	6.70	2.60	2.51	2.53	4	3.50
	10:17		Middle	3.0	16.90	16.90	16.90	8.19	8.19	8.19	31.58	31.58	31.58	83.6	83.0	83.7	6.69	6.65	6.70	2.50	2.50	2.53	3	
12/3/18	14:35	Fine	Middle	3.0	18.60	18.60	18.70	8.23	8.23	8.23	31.69	31.69	31.69	86.7	87.4	86.9	6.69	6.75	6.71	3.05	3.06	3.07	4	3.50
	14:37		Middle	3.0	18.80	18.80	18.70	8.23	8.23	8.23	31.68	31.68	31.69	86.7	86.7	86.9	6.69	6.69	6.71	3.08	3.08	3.07	3	
14/3/18	15:45	Cloudy	Middle	3.0	18.70	18.70	18.75	8.23	8.23	8.23	32.12	32.12	32.12	75.5	75.9	76.0	5.81	5.84	5.85	4.64	4.65	4.64	3	3.00
	15:47		Middle	3.0	18.80	18.80	18.75	8.23	8.23	8.23	32.12	32.12	32.12	76.2	76.4	76.0	5.86	5.88	5.85	4.64	4.63	4.64	3	
16/3/18	15:55	Fine	Middle	2.5	20.10	20.10	20.15	8.16	8.16	8.16	31.22	31.22	31.22	87.6	87.6	87.9	6.60	6.60	6.62	5.06	5.07	5.04	9	9.00
	15:57		Middle	2.5	20.20	20.20	20.15	8.16	8.16	8.16	31.22	31.22	31.22	88.6	87.9	87.9	6.67	6.61	6.62	5.02	5.00	5.04	9	
19/3/18	9:30	Cloudy	Middle	3.0	19.70	19.70	19.70	8.20	8.20	8.20	31.71	31.71	31.71	85.2	84.9	84.8	6.46	6.43	6.42	6.71	6.76	6.74	7	6.50
	9:32		Middle	3.0	19.70	19.70	19.70	8.20	8.20	8.20	31.71	31.71	31.71	84.6	84.6	84.8	6.40	6.40	6.42	6.74	6.75	6.74	6	
21/3/18	8:15	Fine	Middle	3.0	18.80	18.80	18.85	8.18	8.18	8.18	31.36	31.36	31.36	81.8	82.1	82.0	6.31	6.34	6.33	7.21	7.14	7.17	6	5.50
	8:17		Middle	3.0	18.90	18.90	18.85	8.18	8.18	8.18	31.36	31.36	31.36	82.1	81.9	82.0	6.34	6.33	6.33	7.15	7.16	7.17	5	
23/3/18	9:35	Fine	Middle	3.0	19.60	19.60	19.60	8.13	8.13	8.14	31.63	31.63	31.63	84.2	84.4	84.1	6.40	6.41	6.39	5.99	5.99	6.07	8	7.50
	9:40		Middle	3.0	19.60	19.60	19.60	8.14	8.14	8.14	31.63	31.63	31.63	84.2	83.7	84.1	6.40	6.36	6.39	6.15	6.15	6.07	7	
26/3/18	11:30	Fine	Middle	3.0	20.90	20.90	20.95	8.18	8.18	8.18	31.91	31.91	31.91	83.9	84.2	83.9	6.21	6.23	6.21	4.85	4.76	4.74	3	3.50
	11:32		Middle	3.0	21.00	21.00	20.95	8.18	8.18	8.18	31.91	31.91	31.91	83.8	83.8	83.9	6.20	6.20	6.21	4.68	4.68	4.74	4	

Remarks:  
Single underline denotes exceedance over Action Level.  
Double underline denotes exceedance over Limit Level.



**Water Monitoring Result at RW21-P789 - GEC / CRB / SHK  
Mid-Flood Tide**

Date	Time	Weather Condition	Sampling Depth m	Water Temperature °C			pH			Salinity ppt			DO Saturation %		DO mg/L		Turbidity NTU		Suspended Solids mg/L					
				Value	Average		Value	Average		Value	Average		Value	Average	Value	Average	Value	Average	Value	Average				
28/2/18	14:28	Fine	Middle	4.0	22.00	22.00	22.10	7.82	7.82	7.87	31.72	31.72	31.72	83.5	83.5	83.5	6.06	6.06	6.06	2.07	1.93	2.01	3	3.50
	14:30		Middle	4.0	22.20	22.20		7.91	7.91		31.71	31.71		83.7	83.4		6.07	6.03		2.00	2.03		4	
2/3/18	16:15	Cloudy	Middle	3.5	19.80	19.80	19.80	7.95	7.95	7.97	31.66	31.66	31.66	80.4	80.3	80.3	6.05	6.04	6.04	1.77	1.79	1.81	7	8.00
	16:16		Middle	3.5	19.80	19.80		7.99	7.99		31.66	31.66		80.2	80.4		6.03	6.04		1.84	1.85		9	
5/3/18	7:50	Fine	Middle	3.5	21.20	21.20	21.25	8.07	8.07	8.07	31.21	31.21	31.21	85.3	85.8	85.2	6.51	6.54	6.49	4.12	4.12	4.10	4	4.00
	7:52		Middle	3.5	21.30	21.30		8.07	8.07		31.21	31.21		84.5	85.1		6.44	6.48		4.09	4.06		4	
7/3/18	8:10	Fine	Middle	3.5	18.80	18.80	18.80	8.04	8.04	8.04	31.49	31.49	31.49	86.5	86.7	86.7	6.68	6.69	6.69	2.83	2.76	2.79	4	4.00
	8:12		Middle	3.5	18.80	18.80		8.04	8.04		31.48	31.48		86.7	86.7		6.70	6.69		2.76	2.79		4	
9/3/18	10:35	Fine	Middle	4.0	17.20	17.20	17.20	8.18	8.18	8.19	31.46	31.46	31.46	90.2	90.0	89.6	7.18	7.16	7.14	2.36	2.42	2.39	6	6.00
	10:37		Middle	4.0	17.20	17.20		8.19	8.19		31.46	31.46		89.1	89.2		7.10	7.10		2.36	2.42		6	
12/3/18	11:25	Fine	Middle	4.0	19.70	19.70	19.80	8.23	8.23	8.24	31.81	31.81	31.82	91.0	90.9	90.7	6.88	6.87	6.85	2.80	2.79	2.77	6	5.50
	11:27		Middle	4.0	19.90	19.90		8.24	8.24		31.82	31.82		90.6	90.1		6.84	6.80		2.71	2.76		5	
14/3/18	16:00	Cloudy	Middle	4.0	18.80	18.80	18.80	8.22	8.22	8.23	32.14	32.14	32.14	75.0	75.1	75.2	5.77	5.78	5.78	4.69	4.65	4.65	5	4.50
	16:02		Middle	4.0	18.80	18.80		8.23	8.23		32.14	32.14		75.3	75.2		5.79	5.78		4.63	4.62		4	
16/3/18	16:20	Fine	Middle	4.0	20.40	20.40	20.50	8.08	8.08	8.08	31.23	31.23	31.23	84.3	83.9	83.6	6.31	6.28	6.25	3.69	3.68	3.70	5	5.00
	16:22		Middle	4.0	20.60	20.60		8.07	8.07		31.23	31.23		83.1	83.1		6.21	6.21		3.75	3.69		5	
19/3/18	7:15	Cloudy	Middle	3.5	20.30	20.30	20.35	8.06	8.06	8.09	31.44	31.44	31.44	84.1	84.1	84.0	6.31	6.31	6.30	6.52	6.52	6.55	6	6.00
	7:17		Middle	3.5	20.40	20.40		8.11	8.11		31.44	31.44		83.7	84.2		6.27	6.31		6.58	6.58		6	
21/3/18	9:00	Fine	Middle	4.0	18.90	18.90	18.90	8.19	8.19	8.19	31.44	31.44	31.45	82.7	82.6	82.6	6.36	6.37	6.37	7.14	7.14	7.15	8	8.00
	9:02		Middle	4.0	18.90	18.90		8.19	8.19		31.46	31.46		82.7	82.3		6.38	6.35		7.14	7.16		8	
23/3/18	10:30	Fine	Middle	4.0	19.90	19.90	19.95	8.18	8.18	8.19	31.78	31.78	31.78	88.6	88.7	88.4	6.68	6.68	6.66	8.00	7.97	8.00	10	10.00
	10:32		Middle	4.0	20.00	20.00		8.19	8.19		31.78	31.78		88.3	88.1		6.65	6.63		8.01	8.02		10	
26/3/18	11:55	Fine	Middle	4.0	21.10	21.10	21.20	8.18	8.18	8.18	31.85	31.85	31.85	87.1	87.2	86.9	6.42	6.42	6.40	4.87	4.88	4.86	3	3.00
	11:57		Middle	4.0	21.30	21.30		8.18	8.18		31.84	31.84		86.7	86.7		6.38	6.38		4.83	4.84		3	

Remarks:  
Single underline denotes exceedance over Action Level.  
Double underline denotes exceedance over Limit Level.



**Water Monitoring Result at WSD19 - Sheung Wan  
Mid-Flood Tide**

Date	Time	Weather Condition	Sampling Depth m	Water Temperature °C			pH			Salinity ppt			DO Saturation %			DO mg/L		Turbidity NTU			Suspended Solids mg/L			
				Value	Average		Value	Average		Value	Average		Value	Average		Value	Average	Value	Average	Value	Average	Value	Average	
28/2/18	16:05	Fine	Middle	4.0	20.20	20.20	20.30	8.07	8.07	8.08	31.71	31.71	31.71	88.7	89.0	88.7	6.66	6.67	6.65	5.74	5.74	5.72	5	5.50
	16:07		Middle	4.0	20.40	20.40		8.09	8.09		31.70	31.70		88.5	88.6		6.62	6.63		5.69	5.70		6	
2/3/18	17:50	Cloudy	Middle	3.5	18.80	18.90	18.88	8.14	8.14	8.14	32.08	32.08	32.08	85.0	83.6	84.2	6.51	6.40	6.44	1.49	1.52	1.45	5	5.00
	17:51		Middle	3.5	18.90	18.90		8.14	8.14		32.08	32.08		84.2	83.9		6.44	6.42		1.37	1.43		5	
5/3/18	9:50	Fine	Middle	4.0	20.80	20.80	20.90	8.11	8.11	8.12	31.09	31.09	31.09	86.9	86.6	86.7	6.46	6.44	6.44	3.07	3.05	3.03	4	4.00
	9:52		Middle	4.0	21.00	21.00		8.12	8.12		31.09	31.09		86.5	86.6		6.43	6.44		3.00	2.99		4	
7/3/18	9:00	Fine	Middle	4.0	18.60	18.60	18.65	8.12	8.12	8.13	31.39	31.39	31.39	87.9	88.0	87.6	6.81	6.82	6.79	4.37	4.39	4.31	4	5.00
	9:02		Middle	4.0	18.70	18.70		8.13	8.13		31.39	31.39		87.1	87.3		6.75	6.76		4.24	4.24		6	
9/3/18	11:25	Fine	Middle	4.0	17.40	17.40	17.35	8.17	8.17	8.18	31.63	31.63	31.64	86.3	85.7	85.8	6.83	6.80	6.80	2.83	2.82	2.82	4	5.00
	11:27		Middle	4.0	17.30	17.30		8.18	8.18		31.64	31.64		85.5	85.5		6.79	6.79		2.82	2.82		6	
12/3/18	13:25	Fine	Middle	4.0	20.10	20.10	20.35	8.19	8.19	8.19	31.76	31.76	31.76	89.1	88.5	88.9	6.67	6.62	6.65	5.86	5.82	5.81	5	5.00
	13:27		Middle	4.0	20.60	20.60		8.19	8.19		31.75	31.75		89.1	88.8		6.66	6.63		5.75	5.75		5	
14/3/18	14:35	Cloudy	Middle	3.5	19.00	20.10	19.70	7.96	8.19	8.08	32.12	31.76	31.94	80.9	80.9	80.3	6.19	6.20	6.15	6.55	6.45	6.44	6	5.50
	14:37		Middle	3.5	19.10	20.60		7.98	8.19		32.12	31.75		80.1	79.4		6.13	6.08		6.39	6.38		5	
16/3/18	17:20	Fine	Middle	4.0	20.40	20.40	20.60	8.05	8.05	8.06	31.27	31.27	31.27	85.4	85.6	85.4	6.39	6.40	6.38	7.12	7.11	7.09	8	7.00
	17:22		Middle	4.0	20.80	20.80		8.06	8.06		31.26	31.26		84.9	85.5		6.34	6.39		7.09	7.04		6	
19/3/18	8:10	Cloudy	Middle	4.0	20.10	20.10	20.15	8.14	8.14	8.15	31.41	31.41	31.41	85.6	85.7	85.4	6.44	6.44	6.42	6.40	6.41	6.32	8	7.00
	8:12		Middle	4.0	20.20	20.20		8.15	8.15		31.41	31.41		85.1	85.1		6.39	6.39		6.27	6.19		6	
21/3/18	10:45	Fine	Middle	4.0	20.00	20.00	20.05	8.12	8.12	8.13	31.38	31.38	31.38	87.5	87.7	87.5	6.60	6.61	6.60	8.29	8.30	8.31	7	7.50
	10:47		Middle	4.0	20.10	20.10		8.14	8.14		31.37	31.37		87.3	87.4		6.59	6.59		8.31	8.33		8	
23/3/18	11:15	Fine	Middle	4.0	20.50	20.10	20.45	8.10	8.10	8.11	31.68	31.68	31.68	89.8	89.7	89.4	6.70	6.70	6.67	5.18	5.17	5.19	10	9.00
	11:17		Middle	4.0	20.60	20.60		8.12	8.12		31.68	31.68		89.0	89.2		6.64	6.65		5.19	5.22		8	
26/3/18	10:30	Fine	Middle	4.0	21.50	21.50	21.60	8.10	8.10	8.12	31.87	31.87	31.87	85.3	85.9	86.1	6.24	6.28	6.29	8.37	8.37	8.39	4	4.00
	10:32		Middle	4.0	21.70	21.70		8.13	8.13		31.87	31.87		86.4	86.8		6.31	6.34		8.39	8.41		4	

Remarks:  
Single underline denotes exceedance over Action Level.  
Double underline denotes exceedance over Limit Level.





**Water Monitoring Result at C7 - Windsor House  
Mid-Ebb Tide**

Date	Time	Weather Condition	Sampling Depth		Water Temperature		pH			Salinity			DO Saturation		DO		Turbidity		Suspended Solids					
					°C		-			ppt			%		mg/L		NTU		mg/L					
					Value	Average	Value	Average	Value	Average	Value	Average	Value	Average	Value	Average	Value	Average	Value	Average				
28/2/18	23:37	Fine	Middle	-	20.20	20.20	20.20	8.06	8.06	8.06	32.15	32.15	32.15	81.7	80.8	81.0	6.23	6.16	6.17	1.77	1.76	1.80	2	4.00
	23:38		Middle	-	20.20	20.20		8.06	8.06		32.15	32.15		81.0	80.4		6.17	6.12		1.83	1.85		6	
2/3/18	11:45	Fine	Middle	-	19.40	19.40	19.50	8.05	8.05	8.05	31.53	1.53	24.03	81.5	81.1	81.1	6.21	6.18	6.18	3.54	3.53	3.53	2	2.00
	11:47		Middle	-	19.60	19.60		8.04	8.04		31.52	31.52		80.9	81.0		6.16	6.16		3.53	3.51		2	
5/3/18	15:05	Fine	Middle	-	21.20	21.20	21.30	8.13	8.13	8.13	31.13	31.13	31.13	81.5	81.7	81.8	6.02	6.04	6.04	2.50	2.48	2.49	4	4.00
	15:07		Middle	-	21.40	21.40		8.12	8.12		31.12	31.12		82.2	81.9		6.07	6.04		2.47	2.50		4	
7/3/18	16:25	Fine	Middle	-	19.40	19.40	19.50	8.14	8.14	8.14	31.45	31.45	31.45	87.4	87.6	87.4	6.65	6.66	6.64	2.99	2.96	2.97	3	3.00
	16:27		Middle	-	19.60	19.60		8.14	8.14		31.44	31.44		87.4	87.0		6.64	6.61		2.95	2.96		3	
9/3/18	18:00	Fine	Middle	-	20.30	20.30	20.35	8.12	8.12	8.12	31.81	31.81	31.82	77.1	78.1	78.6	7.56	6.25	6.42	4.92	4.87	4.89	8	7.50
	18:30		Middle	-	20.40	20.40		8.12	8.12		31.82	31.82		80.2	79.0		6.02	5.86		4.88	4.89		7	
12/3/18	21:55	Cloudy	Middle	-	18.20	18.20	18.20	8.16	8.16	8.16	32.06	32.06	32.06	83.5	83.1	82.8	6.29	6.26	6.24	1.73	1.34	1.53	4	6.00
	21:56		Middle	-	18.20	18.20		8.16	8.16		32.06	32.06		82.7	82.0		6.23	6.18		1.70	1.36		8	
14/3/18	20:45	Cloudy	Middle	-	19.10	19.10	19.10	8.01	8.01	8.01	31.69	31.69	31.69	80.3	80.0	80.1	6.16	6.14	6.15	1.85	1.47	1.55	6	6.00
	20:46		Middle	-	19.10	19.10		8.01	8.01		31.69	31.70		80.0	80.2		6.14	6.15		1.42	1.44		6	
16/3/18	12:35	Fine	Middle	-	20.20	20.20	20.40	8.03	8.03	8.03	31.27	31.27	31.26	77.2	77.3	77.2	5.79	5.80	5.79	2.93	2.91	2.91	6	6.00
	12:37		Middle	-	20.60	20.60		8.03	8.03		31.25	31.25		77.0	77.1		5.77	5.78		2.90	2.90		6	
19/3/18	13:45	Fine	Middle	-	21.30	21.30	21.40	8.12	8.12	8.12	31.42	31.42	31.42	84.2	84.9	84.2	6.20	6.25	6.20	4.80	4.81	4.79	6	5.00
	13:47		Middle	-	21.50	21.50		8.11	8.11		31.42	31.42		83.5	84.3		6.14	6.20		4.79	4.76		4	
21/3/18	14:00	Fine	Middle	-	20.90	20.90	21.00	8.12	8.12	8.12	31.36	31.36	31.36	83.4	83.1	83.3	6.18	6.16	6.17	4.63	4.58	4.56	3	2.50
	14:02		Middle	-	21.10	21.10		8.11	8.11		31.36	31.36		83.4	83.2		6.17	6.17		4.51	4.50		2	
23/3/18	14:15	Fine	Middle	-	21.60	21.60	21.70	8.13	8.13	8.13	31.62	31.62	31.62	83.2	83.6	83.5	6.08	6.10	6.09	4.63	4.56	4.55	7	6.50
	14:17		Middle	-	21.80	21.80		8.12	8.12		31.61	31.61		83.5	83.6		6.09	6.10		4.50	4.50		6	
26/3/18	21:00	Cloudy	Middle	-	20.70	20.70	20.70	8.14	8.14	8.14	32.58	32.58	32.58	81.8	82.7	81.9	5.94	6.00	5.94	1.28	1.11	1.19	5	5.00
	21:01		Middle	-	20.70	20.70		8.14	8.14		32.58	32.58		81.0	82.0		5.88	5.95		1.26	1.12		5	

Remarks:  
Single underline denotes exceedance over Action Level.  
Double underline denotes exceedance over Limit Level.



**Water Monitoring Result at C1 - HKCEC  
Mid-Ebb Tide**

Date	Time	Weather Condition	Sampling Depth		Water Temperature			pH			Salinity			DO Saturation			DO			Turbidity			Suspended Solids	
					°C		-		ppt		%		mg/L		NTU		mg/L							
					Value	Average	Value	Average	Value	Average	Value	Average	Value	Average	Value	Average	Value	Average	Value	Average	Value	Average		
28/2/18	22:27	Fine	Middle	3.0	20.20	20.20	20.20	8.07	8.07	8.07	32.20	32.20	32.20	83.0	82.1	81.7	6.22	6.15	6.12	1.38	1.43	1.42	5	4.50
	22:28		Middle	3.0	20.20	20.20		8.07	8.07		32.20	32.20		81.0	80.6		6.06	6.03		1.47	1.39		4	
2/3/18	11:10	Fine	Middle	2.5	18.60	18.60	18.65	8.10	8.10	8.10	31.67	31.67	31.67	84.7	84.4	84.5	6.55	6.53	6.54	2.37	2.36	2.36	3	4.00
	11:12		Middle	2.5	18.70	18.70		8.10	8.10		31.66	31.66		84.7	84.3		6.55	6.52		2.36	2.36		5	
5/3/18	14:55	Fine	Middle	2.5	21.20	21.20	21.25	8.15	8.15	8.15	31.18	31.18	31.18	86.8	86.8	86.7	6.41	6.41	6.40	3.99	4.00	3.97	5	4.50
	14:57		Middle	2.5	21.30	21.30		8.15	8.15		31.18	31.18		86.6	86.6		6.39	6.39		3.94	3.95		4	
7/3/18	15:35	Fine	Middle	2.5	18.20	18.20	18.25	8.22	8.22	8.22	31.73	31.73	31.74	87.1	87.2	86.9	6.78	6.79	6.77	2.43	2.46	2.42	<2	<2
	15:37		Middle	2.5	18.30	18.30		8.22	8.22		31.74	31.74		87.0	86.3		6.78	6.73		2.42	2.38		<2	
9/3/18	17:43	Fine	Middle	3.0	17.60	17.60	15.26	8.24	8.24	8.24	31.71	31.71	31.71	80.9	81.6	81.7	6.39	6.44	6.45	1.60	1.59	1.58	5	4.00
	17:45		Middle	3.0	17.60	8.24		8.24	31.71		31.71	82.0		82.1	6.47		6.48	1.57		1.57	3			
12/3/18	18:43	Cloudy	Middle	2.5	17.90	17.90	17.90	8.19	8.19	8.19	32.19	32.19	32.19	83.1	82.7	83.7	6.49	6.45	6.54	1.02	1.04	1.05	2	2.00
	18:44		Middle	2.5	17.90	17.90		8.19	8.19		32.19	32.19		84.6	84.5		6.60	6.60		1.05	1.07		2	
14/3/18	21:41	Cloudy	Middle	2.5	18.70	18.70	18.70	8.11	8.11	8.11	32.08	32.08	32.08	72.1	75.0	74.0	5.55	5.82	5.70	1.68	1.46	1.47	8	7.00
	21:42		Middle	2.5	18.70	18.70		8.11	8.11		32.08	32.08		73.3	75.4		5.64	5.80		1.36	1.37		6	
16/3/18	12:05	Fine	Middle	2.5	19.50	19.50	19.55	8.09	8.09	8.09	31.47	31.47	31.48	81.8	82.3	82.6	6.23	6.28	6.29	5.18	5.16	5.16	6	6.00
	12:07		Middle	2.5	19.60	19.60		8.09	8.09		31.48	31.48		83.1	83.3		6.32	6.34		5.13	5.16		6	
19/3/18	15:35	Fine	Middle	2.5	20.30	20.30	20.35	8.17	8.17	8.17	31.45	31.45	31.45	82.6	82.6	82.8	6.19	6.19	6.21	5.42	5.52	5.58	3	4.00
	13:37		Middle	2.5	20.40	20.40		8.16	8.16		31.45	31.45		83.1	83.0		6.23	6.22		5.64	5.75		5	
21/3/18	14:40	Fine	Middle	2.5	20.10	20.10	20.10	8.17	8.17	8.17	31.53	31.53	31.53	80.9	81.6	81.6	6.10	6.15	6.15	4.87	4.77	4.76	2	3.00
	14:42		Middle	2.5	20.10	20.10		8.17	8.17		31.53	31.53		82.0	82.0		6.18	6.18		4.70	4.68		4	
23/3/18	16:50	Fine	Middle	2.5	20.00	20.00	20.00	8.19	8.19	8.19	31.76	31.76	31.76	82.1	82.3	82.3	6.19	6.21	6.20	5.48	5.41	5.43	8	7.00
	16:52		Middle	2.5	20.00	20.00		8.19	8.19		31.75	31.75		82.3	82.3		6.21	6.20		5.40	5.44		6	
26/3/18	19:15	Cloudy	Middle	3.0	20.60	20.60	20.60	8.12	8.12	8.12	32.41	32.41	32.41	81.0	82.6	82.5	6.00	6.12	6.11	1.58	1.23	1.55	7	7.50
	19:16		Middle	3.0	20.60	20.60		8.12	8.12		32.41	32.41		83.5	83.0		6.18	6.14		1.68	1.71		8	

Remarks:  
Single underline denotes exceedance over Action Level.  
Double underline denotes exceedance over Limit Level.



**Water Monitoring Result at P1 - HKCEC Phase I  
Mid-Ebb Tide**

Date	Time	Weather Condition	Sampling Depth		Water Temperature			pH			Salinity			DO Saturation		DO		Turbidity		Suspended Solids				
					°C			-			ppt			%		mg/L		NTU		mg/L				
					Value	Average		Value	Average		Value	Average		Value	Average		Value	Average	Value	Average	Value	Average	Value	Average
28/2/18	22:03	Fine	Middle	3.0	20.10	20.10	20.10	8.09	8.09	8.09	32.27	32.27	32.27	83.5	83.8	83.3	6.26	6.28	6.24	1.51	1.58	1.54	4	7.50
	22:04		Middle	3.0	20.10	20.10		8.09	8.09	8.09	32.27	32.27		83.3	82.6		83.3	6.23		6.19	6.24		1.52	
2/3/18	10:50	Fine	Middle	2.5	20.20	20.20	20.25	8.03	8.03	8.04	31.76	31.76	31.76	85.0	84.8	84.8	6.38	6.36	6.36	2.77	2.78	2.79	4	4.50
	10:52		Middle	2.5	20.30	20.30		8.05	8.05	8.04	31.76	31.76		84.8	84.6		84.8	6.36		6.35	6.36		2.80	
5/3/18	14:35	Fine	Middle	2.5	22.80	22.80	22.90	8.12	8.12	8.12	31.20	31.20	31.20	89.5	89.6	89.5	6.41	6.42	6.40	1.47	1.46	1.46	5	6.00
	14:37		Middle	2.5	23.00	23.00		8.12	8.12	8.12	31.19	31.19		89.5	89.2		89.5	6.40		6.38	6.40		1.45	
7/3/18	15:15	Fine	Middle	2.5	19.00	19.00	19.05	8.20	8.20	8.21	31.73	31.73	31.73	90.3	90.2	90.3	6.92	6.92	6.92	3.45	3.44	3.42	3	2.50
	15:17		Middle	2.5	19.10	19.10		8.21	8.21	8.21	31.72	31.72		90.3	90.2		90.3	6.93		6.91	6.92		3.42	
9/3/18	17:27	Fine	Middle	3.0	18.30	18.30	18.35	8.17	8.17	8.20	31.91	31.91	31.83	92.9	92.5	92.0	7.22	7.19	7.23	2.41	2.40	2.43	3	4.00
	17:29		Middle	3.0	18.40	18.40		8.22	8.22	8.20	31.74	31.74		91.9	90.8		92.0	7.25		7.26	7.23		2.42	
12/3/18	18:15	Cloudy	Middle	2.5	18.40	18.40	18.40	8.21	8.21	8.21	32.19	32.19	32.19	84.6	84.5	83.9	6.60	6.60	6.53	1.05	1.07	1.07	2	2.50
	18:16		Middle	2.5	18.40	18.40		8.21	8.21	8.21	32.19	32.19		83.8	82.8		83.9	6.49		6.41	6.53		1.10	
14/3/18	21:18	Cloudy	Middle	2.5	18.80	18.80	18.80	8.11	8.11	8.11	32.06	32.06	32.06	82.2	83.1	82.4	6.31	6.37	6.33	1.68	1.96	1.83	5	9.50
	21:19		Middle	2.5	18.80	18.80		8.11	8.11	8.11	32.06	32.06		82.1	82.3		82.4	6.30		6.32	6.33		1.74	
16/3/18	11:45	Fine	Middle	2.5	20.50	20.50	20.60	8.01	8.01	8.02	31.50	31.50	31.50	83.3	82.7	83.6	6.22	8.18	6.74	6.55	6.54	6.57	9	8.00
	11:47		Middle	2.5	20.70	20.70		8.03	8.03	8.02	31.49	31.49		84.0	84.2		83.6	6.26		6.28	6.74		6.59	
19/3/18	15:15	Fine	Middle	2.5	21.70	21.70	21.75	8.12	8.12	8.13	31.51	31.51	31.52	86.0	86.0	85.8	6.29	6.29	6.27	2.45	2.44	2.46	6	5.50
	15:17		Middle	2.5	21.80	21.80		8.13	8.13	8.13	31.52	31.52		85.4	85.8		85.8	6.23		6.26	6.27		2.47	
21/3/18	14:20	Fine	Middle	2.5	21.70	21.70	21.80	8.14	8.14	8.15	31.55	31.55	31.55	84.9	85.5	85.2	6.20	6.24	6.21	5.24	5.30	5.30	4	4.00
	14:22		Middle	2.5	21.90	21.90		8.15	8.15	8.15	31.55	31.55		84.7	85.5		85.2	6.18		6.23	6.21		5.32	
23/3/18	16:25	Fine	Middle	2.5	21.40	21.40	21.50	8.16	8.16	8.17	31.79	31.79	31.79	86.2	86.0	86.2	6.32	6.30	6.31	5.14	6.15	5.87	12	13.00
	16:27		Middle	2.5	21.60	21.60		8.17	8.17	8.17	31.78	31.78		86.0	86.4		86.2	6.29		6.32	6.31		6.09	
26/3/18	18:50	Cloudy	Middle	3.0	20.90	20.90	20.90	8.14	8.14	8.14	32.39	32.39	32.39	84.1	84.2	83.9	6.21	6.21	6.19	0.58	0.50	0.67	7	6.00
	18:51		Middle	3.0	20.90	20.90		8.14	8.14	8.14	32.39	32.39		84.3	82.8		83.9	6.22		6.11	6.19		0.54	

Remarks:  
Single underline denotes exceedance over Action Level.  
Double underline denotes exceedance over Limit Level.



**Water Monitoring Result at P3 - APA  
Mid-Ebb Tide**

Date	Time	Weather Condition	Sampling Depth		Water Temperature			pH			Salinity			DO Saturation		DO		Turbidity		Suspended Solids				
					°C			-			ppt			%		mg/L		NTU		mg/L				
					Value	Average		Value	Average		Value	Average		Value	Average		Value	Average	Value	Average	Value	Average	Value	Average
28/2/18	22:10	Fine	Middle	3.0	20.20	20.20	20.20	8.10	8.10	8.10	32.25	32.25	32.25	82.7	84.5	83.8	6.19	6.33	6.28	1.77	1.79	1.81	3	4.50
	22:11		Middle	3.0	20.20	20.20		8.10	8.10	8.10	32.25	32.25		84.3	83.8		83.8	6.32		6.28	6.28		1.82	
2/3/18	10:55	Fine	Middle	2.5	18.90	18.90	18.95	8.07	8.07	8.08	31.62	31.62	31.62	84.0	84.4	84.7	6.46	6.49	6.51	2.84	2.88	2.87	4	5.00
	10:57		Middle	2.5	19.00	19.00		8.08	8.08	8.08	31.62	31.62		85.2	85.3		85.3	6.55		6.55	6.51		2.89	
5/3/18	14:40	Fine	Middle	2.5	21.30	21.30	21.45	8.14	8.14	8.14	31.19	31.19	31.19	85.5	85.6	85.5	6.29	6.29	6.28	2.35	2.35	2.35	4	5.00
	14:42		Middle	2.5	21.60	21.60		8.14	8.14	8.14	31.18	31.18		85.3	85.7		85.7	6.26		6.28	6.28		2.36	
7/3/18	15:20	Fine	Middle	2.5	18.40	18.40	18.45	8.22	8.22	8.22	31.75	31.75	31.75	87.6	87.8	87.5	6.80	6.82	6.79	3.88	3.85	3.85	5	5.00
	15:22		Middle	2.5	18.50	18.50		8.22	8.22	8.22	31.74	31.74		87.4	87.1		87.1	6.78		6.76	6.79		3.82	
9/3/18	17:31	Fine	Middle	3.0	17.70	17.70	17.75	8.24	8.24	8.24	32.22	31.22	31.70	86.8	86.7	86.6	6.82	6.82	6.81	2.46	2.44	2.44	2	2.00
	17:33		Middle	3.0	17.80	17.80		8.24	8.24	8.24	31.68	31.69		86.5	86.4		86.4	6.80		6.79	6.81		2.43	
12/3/18	18:21	Cloudy	Middle	2.5	18.30	18.30	18.30	8.22	8.22	8.22	32.18	32.18	32.18	84.7	84.8	84.0	6.58	6.59	6.52	1.32	1.28	1.28	3	3.00
	18:22		Middle	2.5	18.30	18.30		8.22	8.22	8.22	32.18	32.18		84.0	82.5		82.5	6.52		6.40	6.52		1.15	
14/3/18	21:23	Cloudy	Middle	2.5	18.80	18.80	18.80	8.11	8.11	8.11	32.06	32.06	32.06	82.2	83.1	82.5	6.31	6.37	6.33	1.68	1.96	1.83	9	7.00
	21:24		Middle	2.5	18.80	18.80		8.11	8.11	8.11	32.06	32.06		82.2	82.3		82.3	6.30		6.32	6.33		1.74	
16/3/18	11:50	Fine	Middle	2.5	19.90	19.90	19.90	8.06	8.06	8.07	31.47	31.47	31.47	84.3	84.7	84.5	6.38	6.41	6.39	6.08	6.04	6.02	8	7.00
	11:52		Middle	2.5	19.90	19.90		8.07	8.07	8.07	31.47	31.47		84.3	84.7		84.7	6.37		6.40	6.39		5.98	
19/3/18	15:20	Fine	Middle	2.5	20.70	20.70	20.75	8.15	8.15	8.15	31.44	31.44	31.44	84.4	84.7	84.8	6.29	6.30	6.31	5.75	5.75	5.73	5	4.50
	15:22		Middle	2.5	20.80	20.80		8.15	8.15	8.15	31.44	31.44		84.7	85.2		85.2	6.30		6.33	6.31		5.70	
21/3/18	14:25	Fine	Middle	2.5	20.50	20.50	20.60	8.17	8.17	8.17	31.55	31.55	31.55	83.9	85.8	85.3	6.40	6.40	6.40	5.07	5.04	5.04	4	4.00
	14:27		Middle	2.5	20.70	20.70		8.17	8.17	8.17	31.55	31.55		85.7	85.9		85.9	6.38		6.40	6.40		5.03	
23/3/18	16:30	Fine	Middle	2.5	20.30	20.30	20.35	8.18	8.18	8.18	31.76	31.76	31.76	85.1	85.0	85.1	6.37	6.36	6.37	5.90	5.89	5.88	7	8.00
	16:32		Middle	2.5	20.40	20.40		8.18	8.18	8.18	31.76	31.76		85.2	85.1		85.1	6.37		6.37	6.37		5.85	
26/3/18	18:55	Cloudy	Middle	3.0	20.80	20.80	20.80	8.15	8.15	8.15	32.40	32.40	32.40	79.0	79.7	79.5	5.84	5.90	5.88	1.86	1.73	1.58	8	6.50
	18:56		Middle	3.0	20.80	20.80		8.15	8.15	8.15	32.40	32.40		79.4	80.0		80.0	5.86		5.90	5.88		1.69	

Remarks:  
Single underline denotes exceedance over Action Level.  
Double underline denotes exceedance over Limit Level.



**Water Monitoring Result at P4 - SOC  
Mid-Ebb Tide**

Date	Time	Weather Condition	Sampling Depth		Water Temperature		pH			Salinity		DO Saturation		DO		Turbidity		Suspended Solids						
					°C		-			ppt		%		mg/L		NTU		mg/L						
					Value	Average	Value	Average	Value	Average	Value	Average	Value	Average	Value	Average	Value	Average	Value	Average				
28/2/18	22:17	Fine	Middle	3.0	20.20	20.20	20.05	8.10	8.10	8.10	32.25	32.25	32.27	85.4	85.1	84.7	6.43	6.41	6.38	1.87	1.81	1.81	8	5.50
	22:18		Middle	3.0	19.90	19.90		8.10	8.10	8.10	32.29	32.29		84.1	84.0		84.7	6.33		6.33	6.38		1.80	
2/3/18	11:00	Fine	Middle	2.5	18.40	18.40	60.08	8.08	8.08	8.08	31.68	31.68	31.68	83.9	84.4	84.1	6.51	6.54	6.52	3.42	3.41	3.42	3	4.00
	11:02		Middle	2.5	18.50	185.00		8.08	8.08	8.08	31.68	31.68		84.1	84.0		84.1	6.52		6.50	6.52		3.43	
5/3/18	14:45	Fine	Middle	2.5	21.00	21.00	21.15	8.14	8.14	8.14	31.17	31.17	31.18	85.1	85.7	85.6	6.30	6.34	6.33	2.82	2.89	2.88	2	3.00
	14:47		Middle	2.5	21.30	21.30		8.14	8.14	8.14	31.18	31.18		85.8	85.8		85.6	6.33		6.33	6.33		2.91	
7/3/18	15:25	Fine	Middle	2.5	18.30	18.30	18.35	8.22	8.22	8.22	31.74	31.74	31.74	87.4	87.7	87.4	6.80	6.82	6.80	2.62	2.60	2.57	3	3.00
	15:27		Middle	2.5	18.40	18.40		8.22	8.22	8.22	31.74	31.74		87.0	87.3		87.4	6.78		6.79	6.80		2.52	
9/3/18	17:35	Fine	Middle	3.0	17.60	17.60	17.65	8.24	8.24	8.24	31.60	31.60	31.66	86.2	84.9	84.9	6.79	6.70	6.69	2.96	2.87	2.88	4	3.50
	17:37		Middle	3.0	17.70	17.70		8.25	8.24	8.24	31.71	31.71		84.3	84.3		84.9	6.64		6.64	6.69		2.85	
12/3/18	18:24	Cloudy	Middle	2.5	18.10	18.10	18.10	8.21	8.21	8.21	32.22	32.22	32.25	82.7	83.7	84.0	6.39	6.52	6.53	1.41	1.37	1.30	4	3.50
	18:25		Middle	2.5	18.10	18.10		8.21	8.21	8.21	32.22	32.32		85.0	84.5		84.0	6.63		6.58	6.53		1.19	
14/3/18	21:29	Cloudy	Middle	2.5	18.90	18.90	18.90	8.12	8.12	8.12	32.08	32.08	32.09	81.0	80.4	79.3	6.21	6.19	6.09	1.10	1.37	1.22	6	6.00
	21:30		Middle	2.5	18.90	18.90		8.12	8.12	8.12	32.09	32.09		78.0	77.7		79.3	5.98		5.96	6.09		1.25	
16/3/18	11:55	Fine	Middle	2.5	19.60	19.60	19.65	8.07	8.07	8.07	31.48	31.48	31.48	82.8	82.6	82.7	6.29	6.27	6.28	5.75	6.84	6.54	9	8.00
	11:57		Middle	2.5	19.70	19.70		8.07	8.07	8.07	31.47	31.47		82.7	82.8		82.7	6.27		6.28	6.28		6.86	
19/3/18	15:25	Fine	Middle	2.5	20.50	20.50	20.60	8.17	8.17	8.17	31.44	31.44	31.44	85.2	84.9	84.9	6.36	6.34	6.34	5.65	5.52	5.53	6	5.00
	15:27		Middle	2.5	20.70	20.70		8.17	8.17	8.17	31.44	31.44		84.8	84.8		84.9	6.33		6.33	6.34		5.44	
21/3/18	14:30	Fine	Middle	2.5	20.30	20.30	20.35	8.16	8.16	8.16	31.47	31.47	31.47	83.1	83.8	83.5	6.23	6.29	6.26	5.13	5.09	5.07	4	4.00
	14:32		Middle	2.5	20.40	20.40		8.16	8.16	8.16	31.47	31.47		83.4	83.6		83.5	6.25		6.27	6.26		5.04	
23/3/18	16:35	Fine	Middle	2.5	20.10	20.10	20.15	8.19	8.19	8.19	31.75	31.75	31.75	83.7	84.3	84.6	6.29	6.33	6.35	5.38	5.38	5.37	12	13.00
	16:37		Middle	2.5	20.20	20.20		8.19	8.19	8.19	31.75	31.75		85.2	85.2		84.6	6.40		6.39	6.35		5.33	
26/3/18	19:04	Cloudy	Middle	3.0	20.80	20.80	20.85	8.15	8.15	8.15	32.40	32.40	32.40	81.1	80.8	81.6	5.94	5.97	6.00	1.54	1.47	1.29	7	7.50
	19:05		Middle	3.0	20.90	20.90		8.15	8.15	8.15	32.40	32.40		82.0	82.4		81.6	6.02		6.07	6.00		0.91	

Remarks:  
Single underline denotes exceedance over Action Level.  
Double underline denotes exceedance over Limit Level.



**Water Monitoring Result at P5 - WCT / RT / IT  
Mid-Ebb Tide**

Date	Time	Weather Condition	Sampling Depth		Water Temperature		pH			Salinity		DO Saturation		DO		Turbidity		Suspended Solids						
					°C		-			ppt		%		mg/L		NTU		mg/L						
					Value	Average	Value	Average	Value	Average	Value	Average	Value	Average	Value	Average	Value	Average	Value	Average				
28/2/18	22:23	Fine	Middle	3.0	20.10	20.00	20.03	8.10	8.10	8.10	32.28	32.28	32.28	83.3	82.7	82.9	6.26	6.23	6.24	1.83	1.87	1.88	5	9.50
	22:24		Middle	3.0	20.00	20.00		8.10	8.10	8.10	32.28	32.28		83.2	82.2		6.26	6.19		6.24	1.89		1.92	
2/3/18	11:05	Fine	Middle	2.5	18.40	18.40	18.45	8.10	8.10	8.10	31.70	31.70	31.70	82.1	82.9	82.7	6.43	6.44	6.44	2.65	2.65	2.65	4	3.50
	11:07		Middle	2.5	18.50	18.50		8.10	8.10	8.10	31.70	31.70		82.9	83.0		6.44	6.44		6.44	2.64		2.64	
5/3/18	14:50	Fine	Middle	2.5	20.70	20.70	20.80	8.14	8.14	8.14	31.17	31.17	31.17	86.0	86.4	86.3	6.42	6.44	6.44	2.90	2.92	2.92	4	3.50
	14:52		Middle	2.5	20.90	20.90		8.14	8.14	8.14	31.17	31.17		86.6	86.3		6.45	6.43		6.44	2.93		2.92	
7/3/18	15:30	Fine	Middle	2.5	18.20	18.20	18.25	8.22	8.22	8.22	31.73	31.73	31.73	86.2	86.2	86.2	6.72	6.71	6.71	2.34	2.44	2.39	2	2.50
	15:32		Middle	2.5	18.30	18.30		8.22	8.22	8.22	31.73	31.73		86.2	86.1		6.71	6.70		6.71	2.40		2.38	
9/3/18	17:39	Fine	Middle	3.0	17.60	17.60	17.60	8.24	8.24	8.24	31.74	31.74	31.74	83.5	84.7	84.4	6.60	6.69	6.67	2.65	2.63	2.61	2	3.00
	17:41		Middle	3.0	17.60	17.60		8.23	8.23	8.23	31.73	31.73		84.6	84.7		6.68	6.69		6.67	2.62		2.55	
12/3/18	18:33	Cloudy	Middle	2.5	18.00	18.00	18.00	8.21	8.21	8.21	32.22	32.22	32.22	83.6	84.0	84.2	6.52	6.56	6.55	1.38	1.22	1.37	3	3.00
	18:34		Middle	2.5	18.00	18.00		8.21	8.21	8.21	32.22	32.22		84.3	85.0		6.58	6.53		6.55	1.48		1.39	
14/3/18	21:37	Cloudy	Middle	2.5	18.90	18.90	18.90	8.12	8.12	8.12	32.09	32.08	32.09	79.2	79.0	78.5	6.08	6.07	6.02	1.18	1.03	1.16	7	6.50
	21:38		Middle	2.5	18.90	18.90		8.12	8.12	8.12	32.09	32.09		78.0	77.7		6.02	5.98		6.02	1.25		1.17	
16/3/18	12:00	Fine	Middle	2.5	19.70	19.70	19.75	8.08	8.08	8.08	31.47	31.47	31.47	81.1	81.4	81.2	6.16	6.18	6.16	5.71	5.68	5.69	7	7.00
	12:02		Middle	2.5	19.80	19.80		8.08	8.08	8.08	31.47	31.47		81.1	81.1		6.16	6.15		6.16	5.69		5.66	
19/3/18	15:30	Fine	Middle	2.5	20.40	20.40	20.40	8.16	8.16	8.16	31.45	31.45	31.45	83.6	83.7	83.4	6.27	6.27	6.25	6.05	6.15	6.13	5	5.00
	15:32		Middle	2.5	20.40	20.40		8.16	8.16	8.16	31.45	31.45		82.9	83.4		6.21	6.25		6.25	6.17		6.16	
21/3/18	14:35	Fine	Middle	2.5	20.10	20.10	20.10	8.17	8.17	8.17	31.52	31.52	31.52	82.1	82.4	82.5	6.19	6.20	6.21	4.96	4.96	4.94	4	3.50
	14:37		Middle	2.5	20.10	20.10		8.17	8.17	8.17	31.51	31.51		82.8	82.7		6.23	6.23		6.21	4.93		4.91	
23/3/18	16:40	Fine	Middle	2.5	19.90	19.90	19.95	8.19	8.19	8.19	31.76	31.76	31.76	82.7	83.2	83.4	6.23	6.27	6.29	5.66	5.66	5.66	7	7.00
	16:42		Middle	2.5	20.00	20.00		8.19	8.19	8.19	31.75	31.75		83.9	83.8		6.32	6.32		6.29	5.65		5.67	
26/3/18	19:11	Cloudy	Middle	3.0	20.80	20.80	20.80	8.16	8.16	8.16	32.40	32.40	32.40	79.9	79.7	79.7	5.92	5.90	5.90	1.90	1.87	1.83	6	6.00
	19:12		Middle	3.0	20.80	20.80		8.16	8.16	8.16	32.40	32.40		79.5	79.5		5.88	5.88		5.90	1.75		1.80	

Remarks:  
Single underline denotes exceedance over Action Level.  
Double underline denotes exceedance over Limit Level.



**Water Monitoring Result at RW21-P789 - GEC / CRB / SHK  
Mid-Ebb Tide**

Date	Time	Weather Condition	Sampling Depth		Water Temperature		pH			Salinity			DO Saturation		DO		Turbidity		Suspended Solids					
					°C		-			ppt			%		mg/L		NTU		mg/L					
					Value	Average	Value	Average	Value	Average	Value	Average	Value	Average	Value	Average	Value	Average	Value	Average				
28/2/18	22:40	Fine	Middle	4.0	20.20	20.20	20.20	8.07	8.07	8.07	32.30	32.30	32.30	81.7	82.8	81.7	6.23	6.31	6.23	1.57	1.62	1.63	2	4.00
	22:41		Middle	4.0	20.20	20.20		8.07	8.07		32.30	32.30		81.3	81.1		6.20	6.18		6.23	1.67		1.65	
2/3/18	11:30	Fine	Middle	3.5	18.70	18.70	18.75	8.11	8.11	8.12	31.71	31.71	31.71	87.8	87.9	87.6	6.77	6.78	6.76	2.37	2.36	2.36	6	5.00
	11:32		Middle	3.5	18.80	18.80		8.12	8.12		31.70	31.70		87.4	87.3		6.74	6.73		6.76	2.36		2.35	
5/3/18	15:45	Fine	Middle	3.5	21.90	21.90	22.05	8.01	8.01	8.02	30.86	30.86	55.86	83.5	83.9	83.8	6.10	6.12	6.11	1.91	1.90	1.91	3	3.50
	15:47		Middle	3.5	22.20	22.20		8.02	8.02		30.85	30.85		83.9	83.9		6.11	6.10		6.11	1.91		1.91	
7/3/18	15:45	Fine	Middle	3.5	18.60	18.60	18.65	8.22	8.22	8.22	31.73	31.73	31.73	89.5	88.5	89.3	6.91	6.84	6.90	2.50	2.50	2.50	4	4.00
	15:47		Middle	3.5	18.70	18.70		8.22	8.22		31.73	31.73		89.5	89.8		6.91	6.93		6.90	2.51		2.50	
9/3/18	17:50	Fine	Middle	3.0	17.80	17.80	17.80	8.17	8.17	8.19	31.76	31.76	31.50	86.8	86.6	85.9	6.82	6.80	6.76	1.45	1.36	1.35	4	3.00
	17:52		Middle	3.0	17.80	17.80		8.20	8.20		31.24	31.24		85.3	85.0		6.73	6.67		6.76	1.31		1.28	
12/3/18	19:10	Cloudy	Middle	3.5	18.60	18.30	18.53	8.17	8.17	8.17	32.40	32.40	32.40	85.6	85.8	85.5	6.34	6.36	6.33	2.58	2.70	2.38	4	6.00
	19:11		Middle	3.5	18.60	18.60		8.17	8.17		32.40	32.40		84.7	85.7		6.28	6.35		6.33	2.09		2.13	
14/3/18	21:02	Cloudy	Middle	4.0	19.00	19.00	19.00	8.10	8.10	8.10	32.05	32.05	32.05	83.4	82.2	82.7	6.42	6.30	6.34	1.07	1.06	1.08	6	6.00
	21:03		Middle	4.0	19.00	19.00		8.10	8.10		32.05	32.05		83.5	81.5		6.39	6.24		6.34	1.11		1.08	
16/3/18	12:15	Fine	Middle	3.5	19.80	19.80	19.85	8.05	8.05	8.06	31.45	31.45	31.45	85.5	85.1	85.3	6.48	6.44	6.46	4.85	4.74	4.78	7	7.50
	12:17		Middle	3.5	19.90	19.90		8.06	8.06		31.44	31.44		85.2	85.5		6.44	6.47		6.46	4.74		4.77	
19/3/18	13:30	Fine	Middle	3.5	21.00	21.00	21.15	8.14	8.14	8.15	31.62	31.62	31.62	84.9	84.2	84.6	6.28	6.22	6.25	7.28	7.27	7.27	6	6.00
	13:32		Middle	3.5	21.30	21.30		8.15	8.15		31.61	31.61		84.3	84.9		6.22	6.26		6.25	7.27		7.26	
21/3/18	13:30	Fine	Middle	4.0	20.20	20.20	20.25	8.16	8.16	8.16	31.61	31.61	31.61	81.7	82.3	82.1	6.13	6.18	6.16	5.52	5.52	5.55	2	3.00
	13:32		Middle	4.0	20.30	20.30		8.16	8.16		31.61	31.61		82.2	82.2		6.17	6.17		6.16	5.57		5.58	
23/3/18	13:45	Fine	Middle	4.0	21.70	21.70	21.80	8.20	8.20	8.20	31.96	31.96	31.96	88.4	88.2	88.1	6.44	6.42	6.41	5.64	5.61	5.63	9	8.00
	13:47		Middle	4.0	21.90	21.90		8.19	8.19		31.95	31.95		88.0	87.7		6.40	6.37		6.41	5.64		5.64	
26/3/18	19:36	Cloudy	Middle	4.0	20.70	20.70	20.70	8.12	8.12	8.12	32.37	32.37	32.37	76.0	76.2	76.5	5.60	5.64	5.65	0.32	0.31	0.31	5	5.00
	19:37		Middle	4.0	20.70	20.70		8.12	8.12		32.37	32.37		76.6	77.0		5.67	5.70		5.65	0.24		0.37	

Remarks:  
Single underline denotes exceedance over Action Level.  
Double underline denotes exceedance over Limit Level.



**Water Monitoring Result at WSD19 - Sheung Wan  
Mid-Ebb Tide**

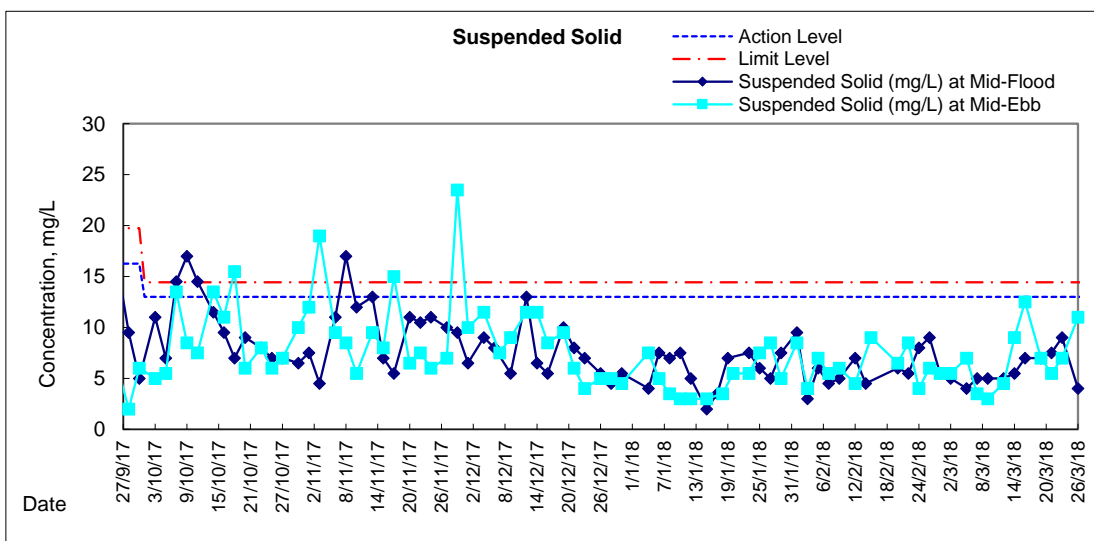
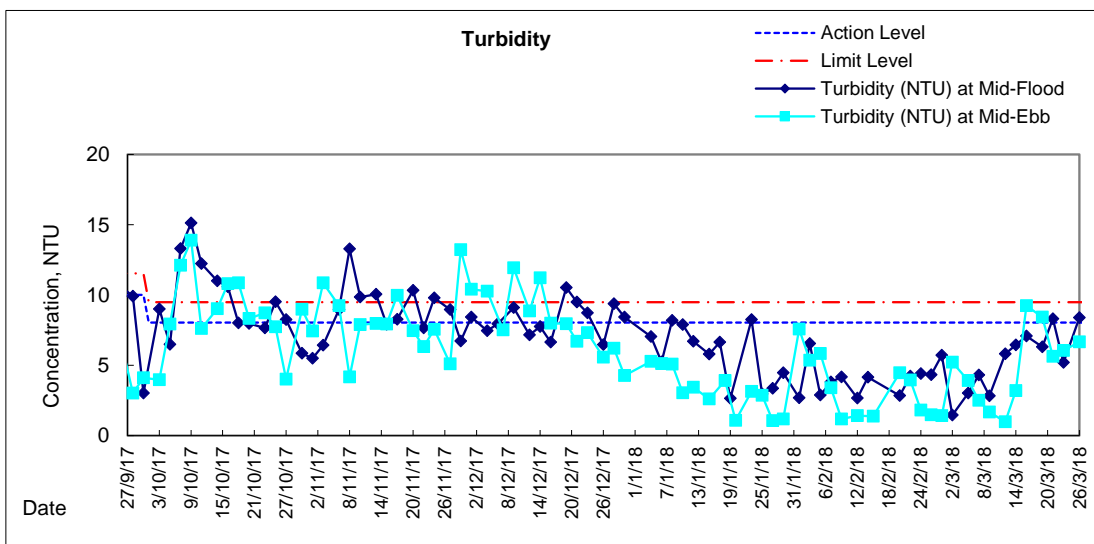
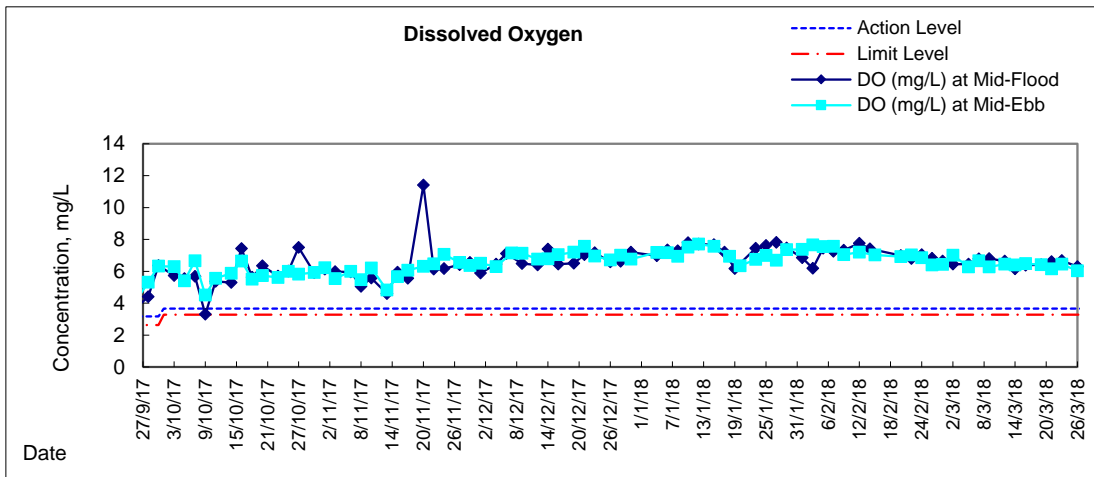
Date	Time	Weather Condition	Sampling Depth		Water Temperature			pH			Salinity		DO Saturation		DO		Turbidity		Suspended Solids					
					°C			-			ppt		%		mg/L		NTU		mg/L					
					Value	Average		Value	Average		Value	Average	Value	Average	Value	Average	Value	Average	Value	Average				
28/2/18	21:20	Fine	Middle	4.0	20.10	20.10	20.10	8.07	8.07	8.07	32.40	32.40	32.40	86.2	85.1	85.7	6.53	6.43	6.43	1.37	1.49	1.42	5	5.50
	21:21		Middle	4.0	20.10	20.10		8.07	8.07		32.40	32.40		86.2	85.1		6.41	6.35		6.43	1.45		1.35	
2/3/18	14:30	Fine	Middle	4.0	20.30	20.30	20.45	8.23	8.23	8.23	31.74	31.74	31.74	94.5	94.2	93.8	7.07	7.05	7.01	5.18	5.24	5.23	5	5.50
	14:32		Middle	4.0	20.60	20.60		8.22	8.22		31.73	31.73		93.0	93.4		6.95	6.98		7.01	5.24		5.24	
5/3/18	13:25	Fine	Middle	4.0	21.50	21.50	21.70	8.14	8.14	8.14	31.18	31.18	31.17	85.3	85.6	85.6	6.25	6.27	6.27	3.99	3.91	3.91	8	7.00
	13:27		Middle	4.0	21.90	21.90		8.14	8.14		31.16	31.16		86.0	85.6		6.29	6.26		6.27	3.88		3.85	
7/3/18	14:10	Fine	Middle	4.0	19.00	19.00	19.10	8.18	8.18	8.18	31.69	31.69	31.69	86.7	85.1	86.5	6.64	6.60	6.65	2.50	2.50	2.51	4	3.50
	14:12		Middle	4.0	19.20	19.20		8.18	8.18		31.68	31.68		87.0	87.3		6.67	6.69		6.65	2.51		2.51	
9/3/18	16:31	Fine	Middle	3.0	18.70	18.70	18.75	8.15	8.15	8.17	31.71	31.71	109.16	84.1	84.7	84.3	6.56	6.54	6.28	1.72	1.72	1.67	3	3.00
	16:33		Middle	3.0	18.80	18.80		8.18	8.18		341.61	31.61		84.2	84.2		6.00	6.00		6.28	1.65		1.60	
12/3/18	17:35	Cloudy	Middle	4.0	18.10	18.10	18.10	8.13	8.13	8.13	32.13	32.13	32.13	84.4	84.1	82.9	6.56	6.53	6.44	1.08	0.74	0.98	4	4.50
	17:35		Middle	4.0	18.10	18.10		8.13	8.13		32.13	32.13		82.0	81.2		6.37	6.31		6.44	1.02		1.06	
14/3/18	21:52	Cloudy	Middle	3.5	18.90	18.90	18.90	8.04	8.04	8.04	31.37	31.37	31.37	83.4	83.6	83.0	6.42	6.43	6.39	3.24	3.29	3.20	10	9.00
	21:53		Middle	3.5	18.90	18.90		8.04	8.04		31.37	31.37		82.6	82.3		6.36	6.34		6.39	3.18		3.09	
16/3/18	11:00	Fine	Middle	3.5	20.90	20.90	21.10	7.30	7.30	7.35	31.58	31.58	31.59	88.4	88.2	88.2	6.52	6.50	6.49	9.31	9.26	9.24	12	12.50
	11:02		Middle	3.5	21.30	21.30		7.39	7.39		31.60	31.60		88.3	87.9		6.49	6.45		6.49	9.19		9.18	
19/3/18	11:30	Fine	Middle	4.0	21.00	21.00	21.10	8.14	8.14	8.14	31.53	31.53	31.53	86.9	87.0	86.7	6.43	6.43	6.41	8.43	8.43	8.44	7	7.00
	11:32		Middle	4.0	21.20	21.20		8.14	8.14		31.53	31.53		86.3	86.4		6.38	6.38		6.41	8.43		8.45	
21/3/18	15:40	Fine	Middle	4.0	20.40	20.40	20.40	8.15	8.15	8.16	31.51	31.51	31.52	82.4	81.9	82.2	6.17	6.14	6.16	5.57	5.64	5.63	5	5.50
	15:42		Middle	4.0	20.40	20.40		8.16	8.16		31.52	31.52		82.3	82.3		6.16	6.16		6.16	5.67		5.64	
23/3/18	15:20	Fine	Middle	4.0	21.20	21.20	21.30	8.16	8.16	8.16	31.73	31.73	31.73	87.4	87.5	87.6	6.44	6.44	6.45	6.04	6.07	6.06	6	7.00
	15:22		Middle	4.0	21.40	21.40		8.16	8.16		31.73	31.73		87.7	87.8		6.46	6.46		6.45	6.09		6.02	
26/3/18	17:40	Cloudy	Middle	4.0	21.40	21.40	21.40	8.00	8.00	8.00	32.12	32.12	32.12	83.4	83.8	82.7	6.09	6.12	6.04	6.84	6.86	6.66	11	11.00
	17:41		Middle	4.0	21.40	21.40		8.00	8.00		32.12	32.12		81.9	81.5		5.98	5.95		6.04	6.57		6.37	

Remarks:  
Single underline denotes exceedance over Action Level.  
Double underline denotes exceedance over Limit Level.



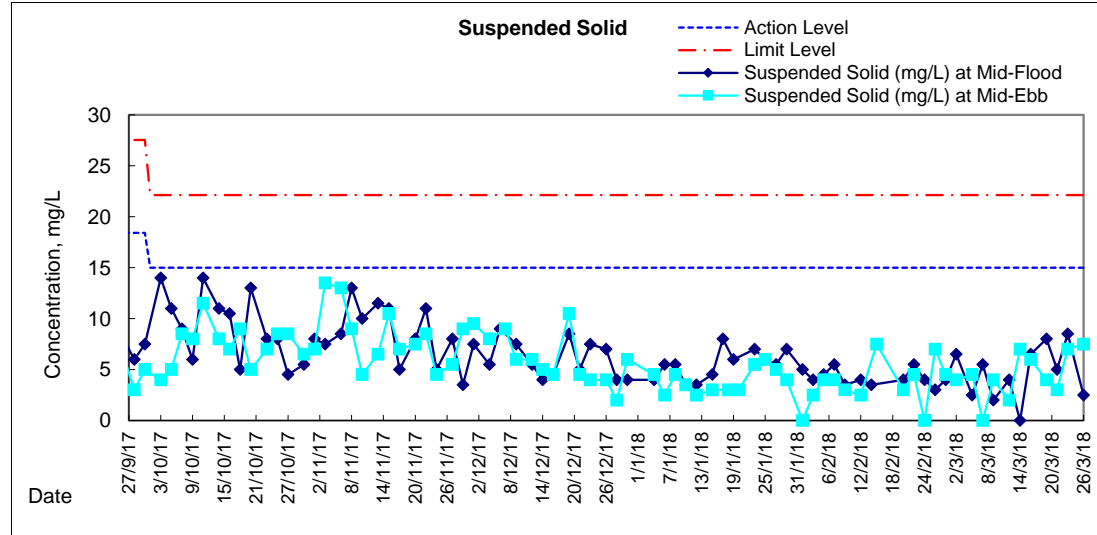
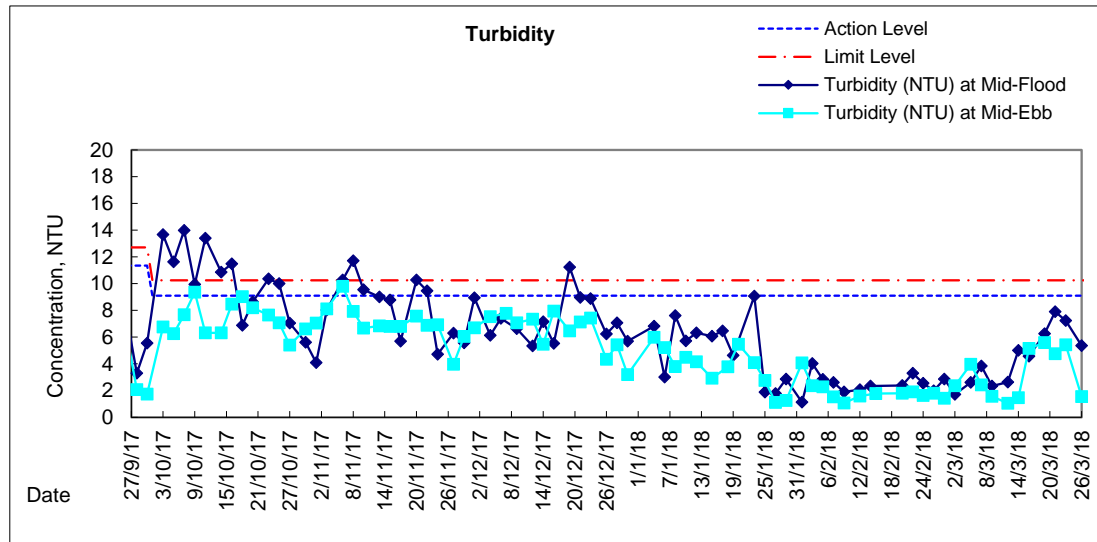
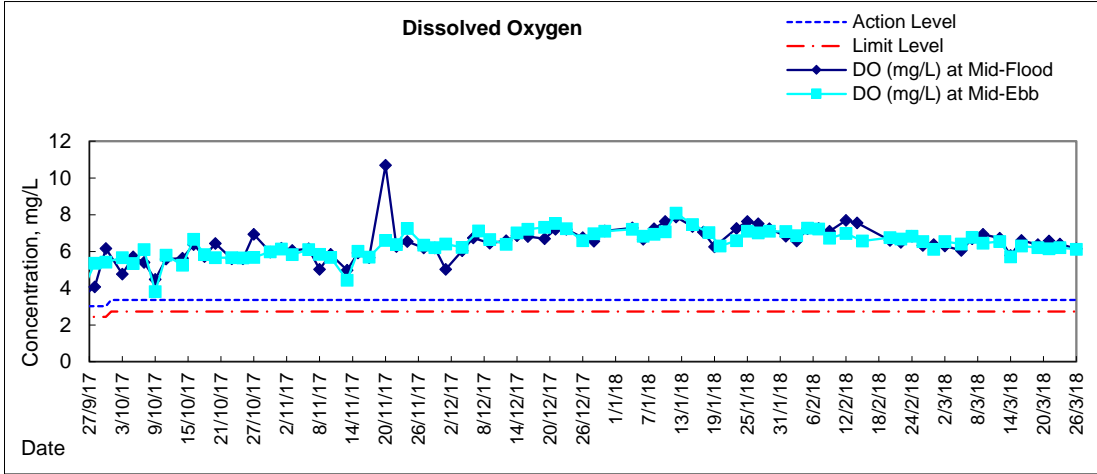


# Graphic Presentation of Water Quality Result of WSD19 - Sheung Wan



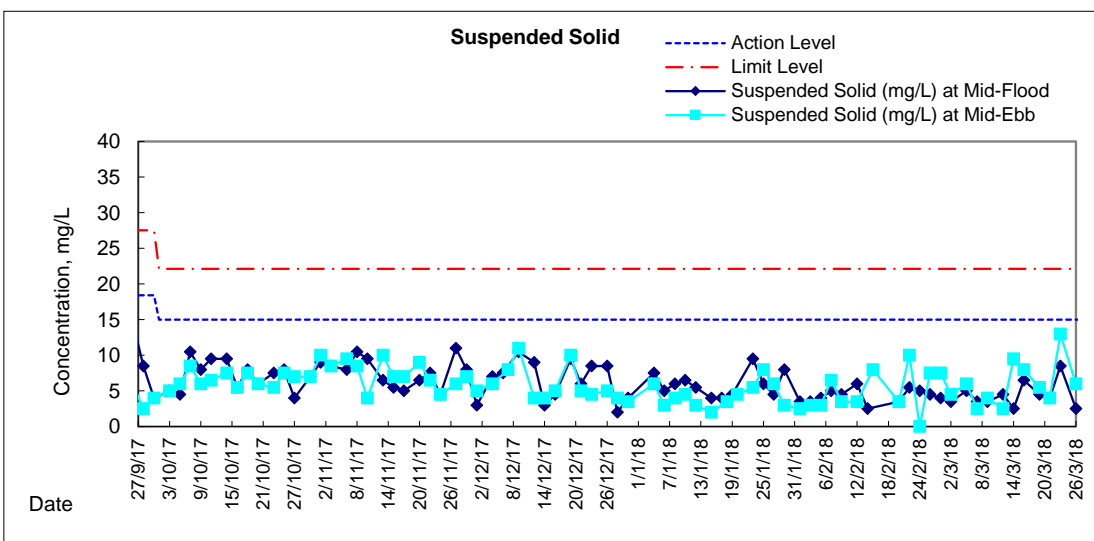
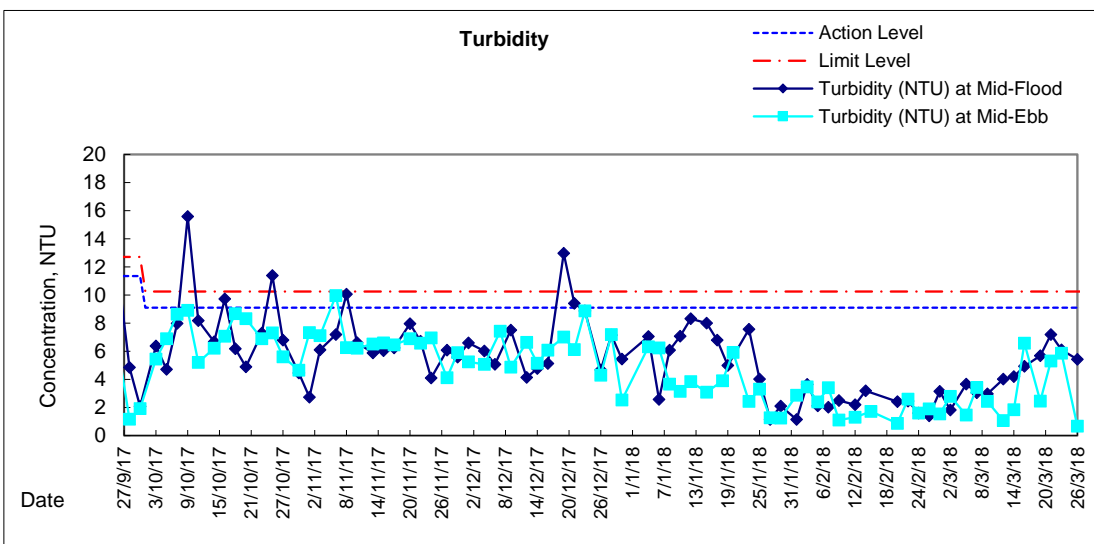
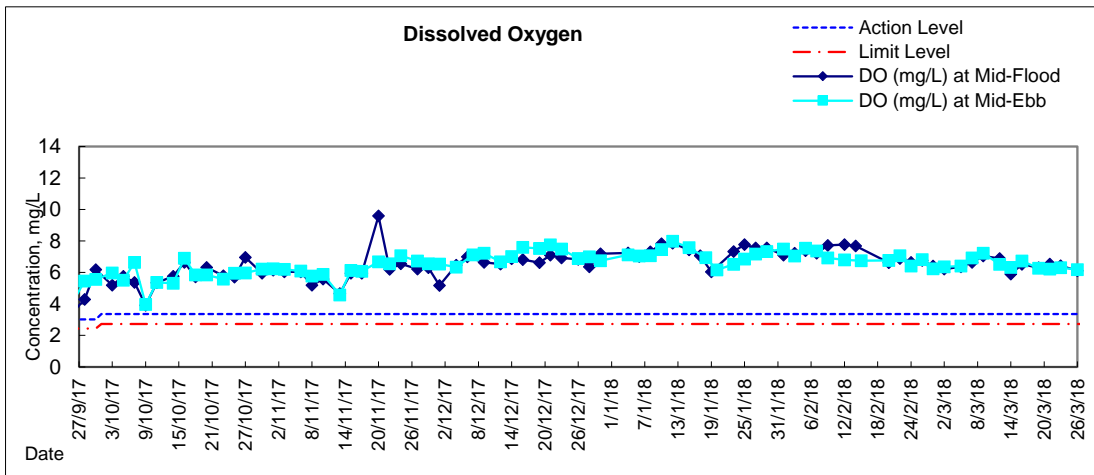


### Graphic Presentation of Water Quality Result of C1 - HKCEC



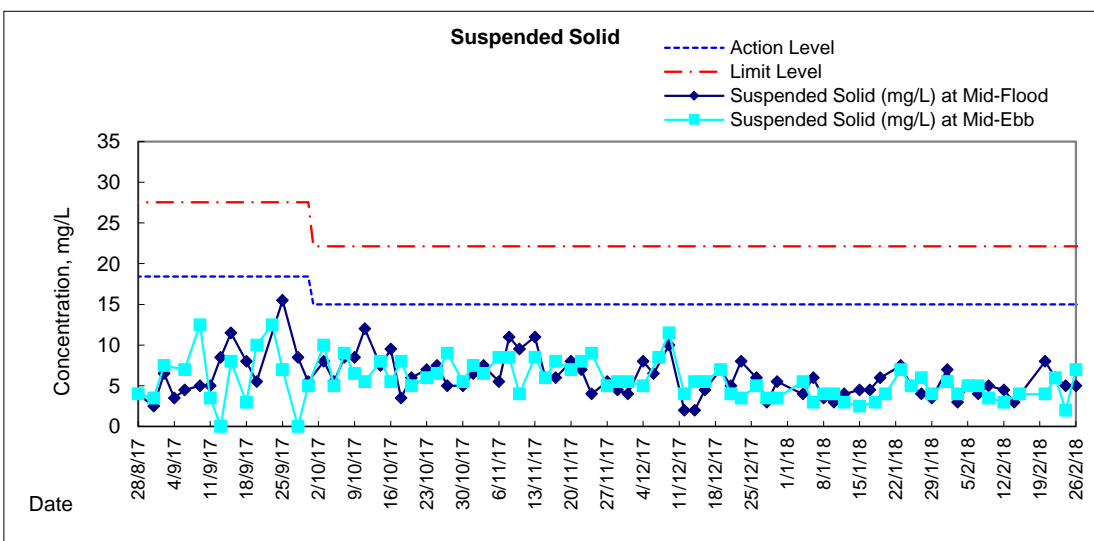
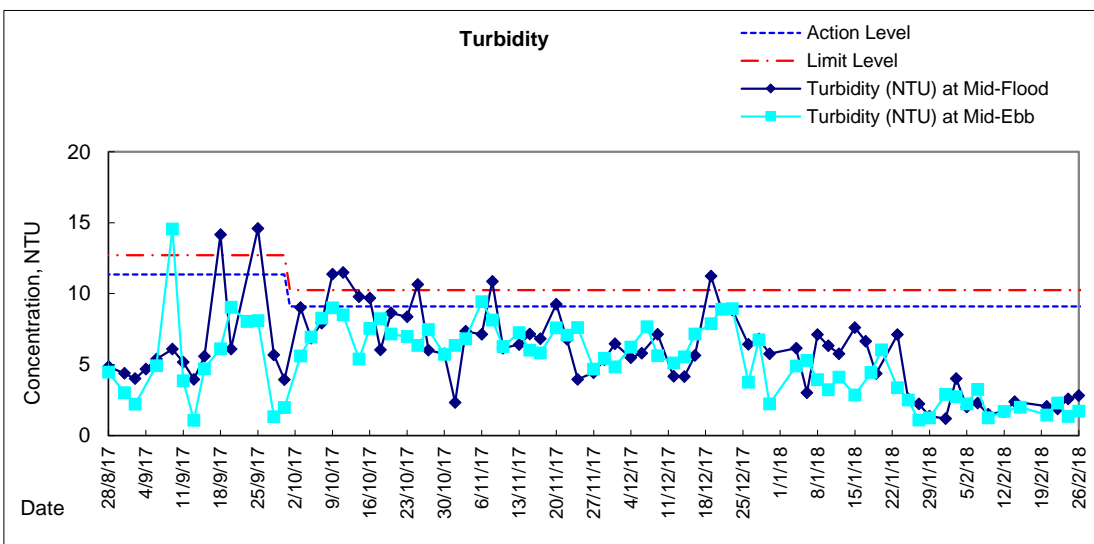
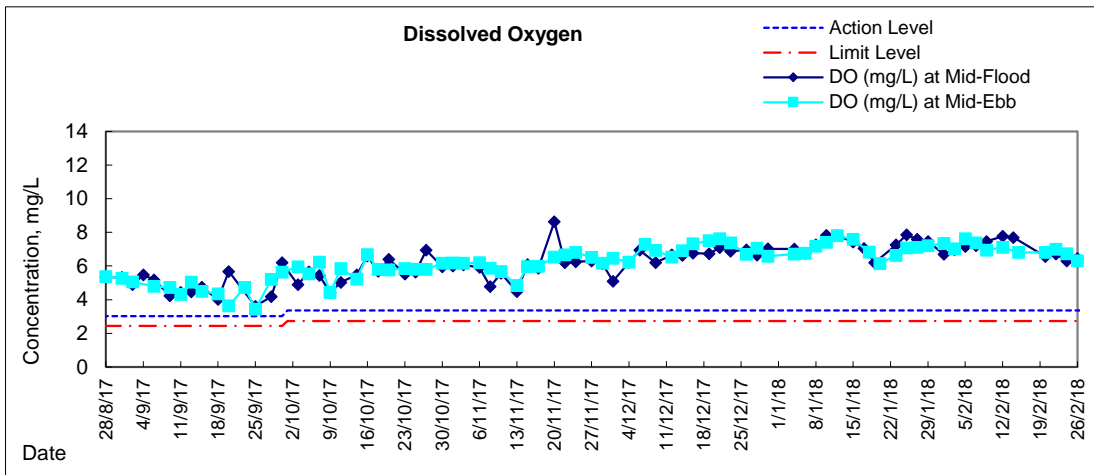


# Graphic Presentation of Water Quality Result of P1 - HKCEC Phase I



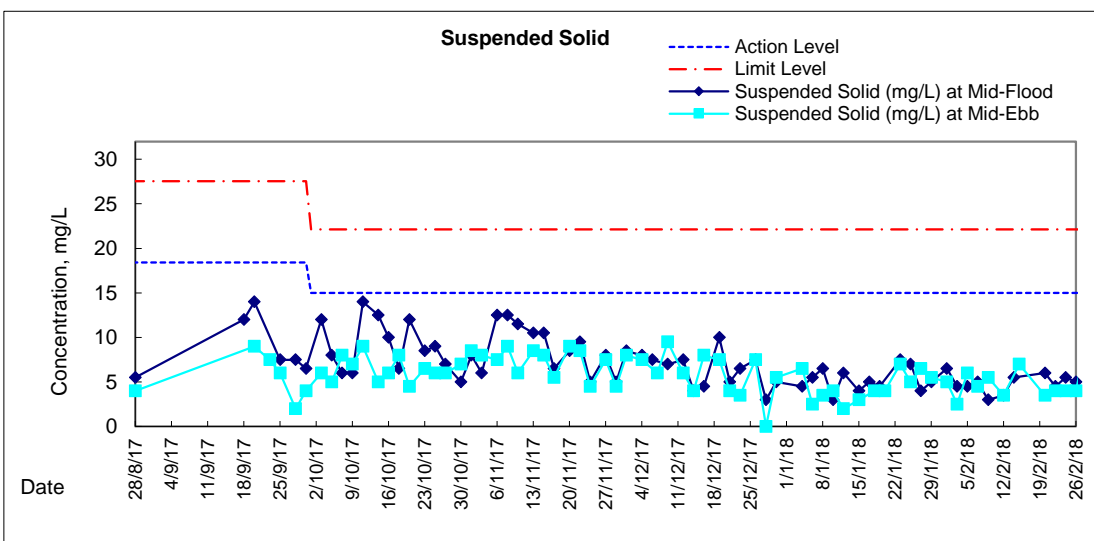
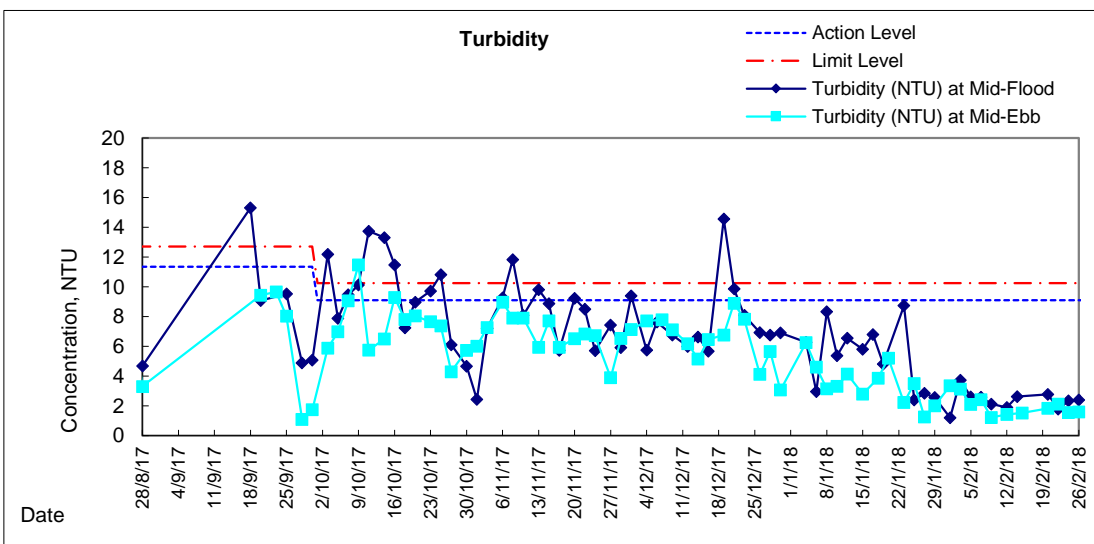
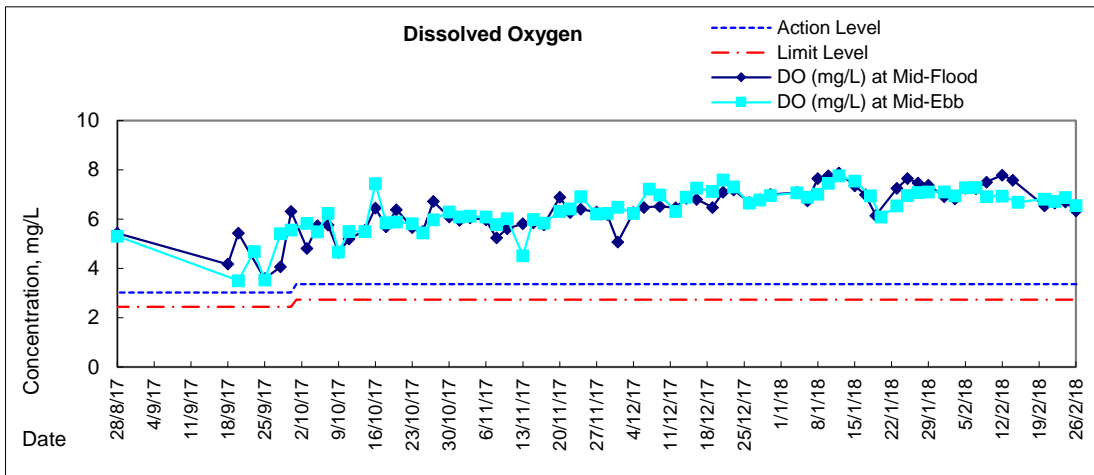


### Graphic Presentation of Water Quality Result of P3 - APA



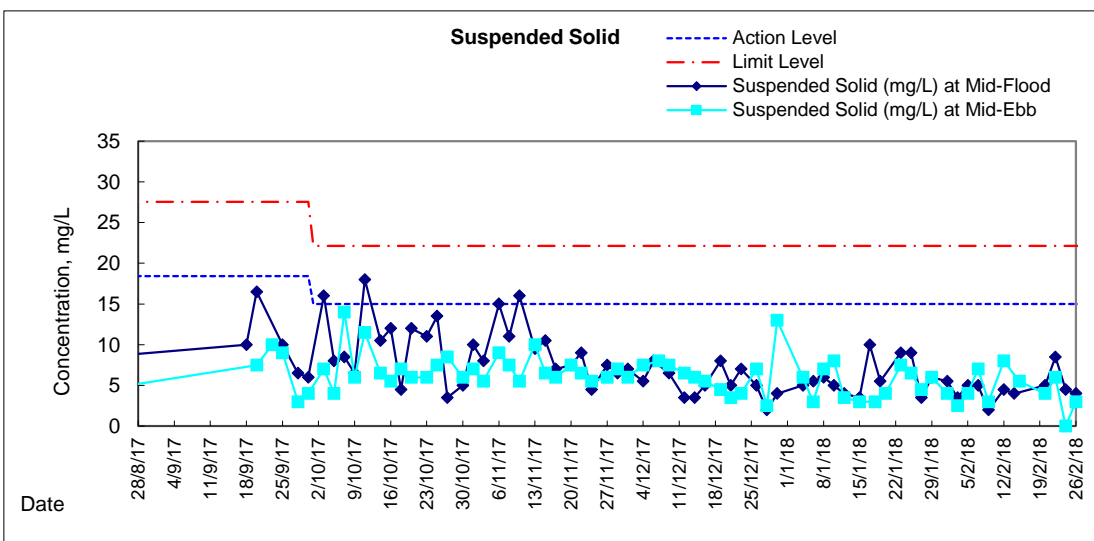
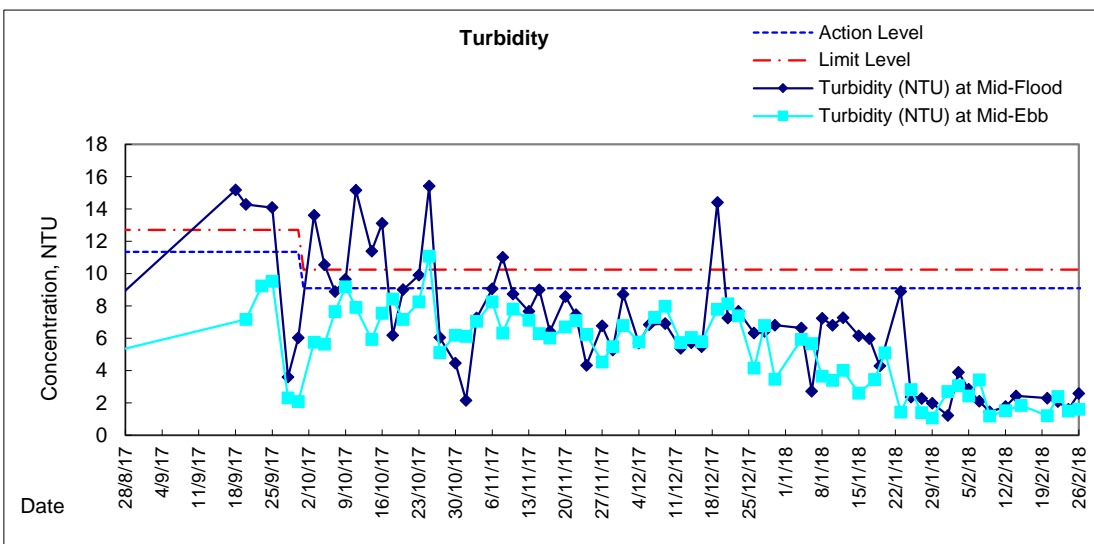
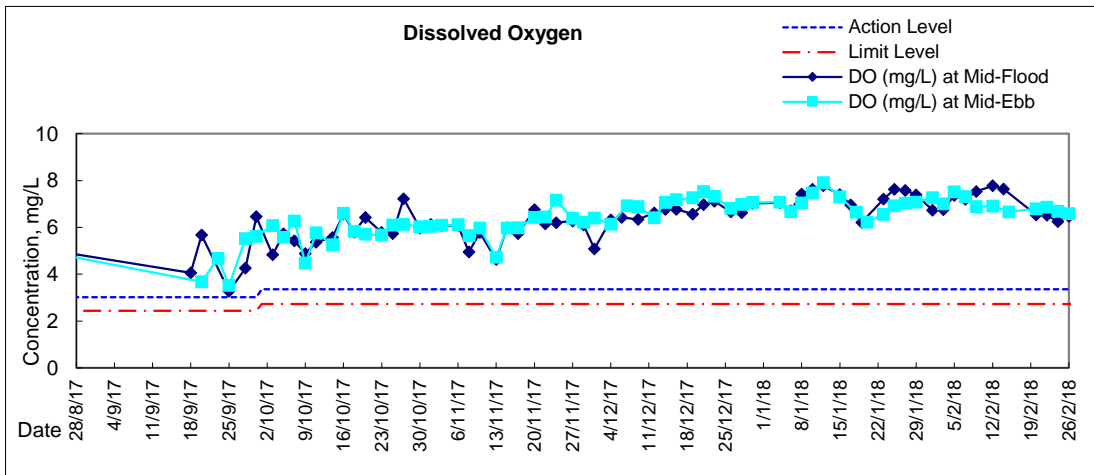


### Graphic Presentation of Water Quality Result of P5 - WCT / RT / IT



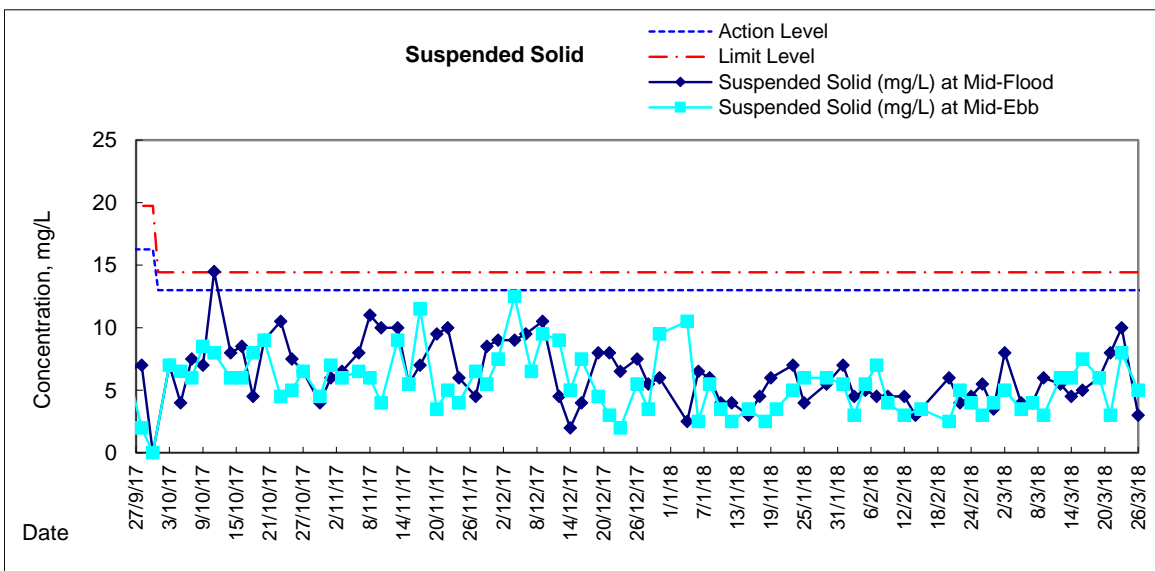
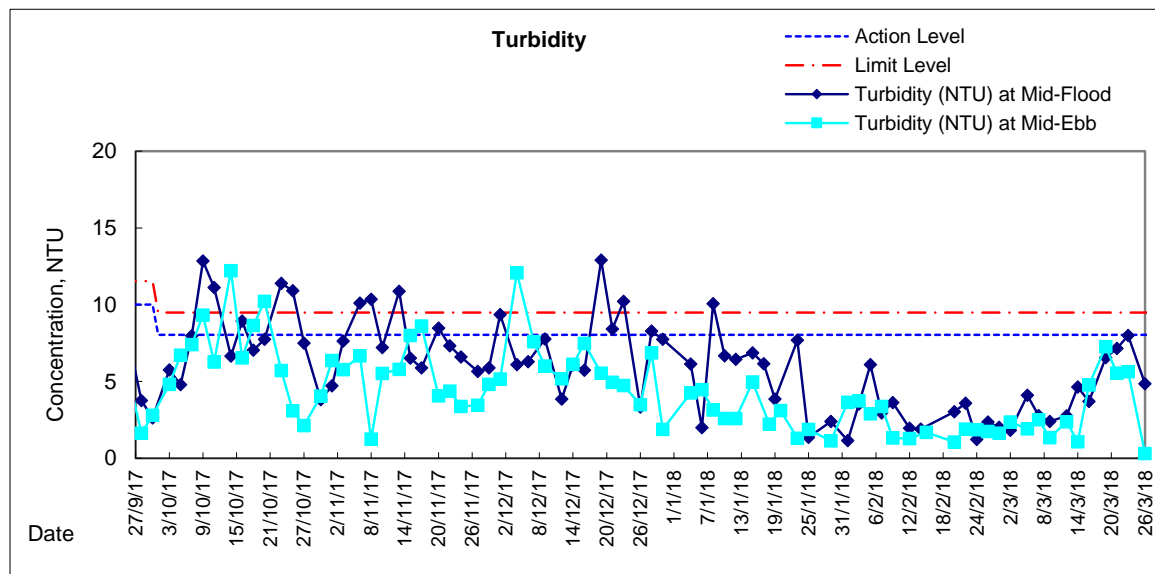
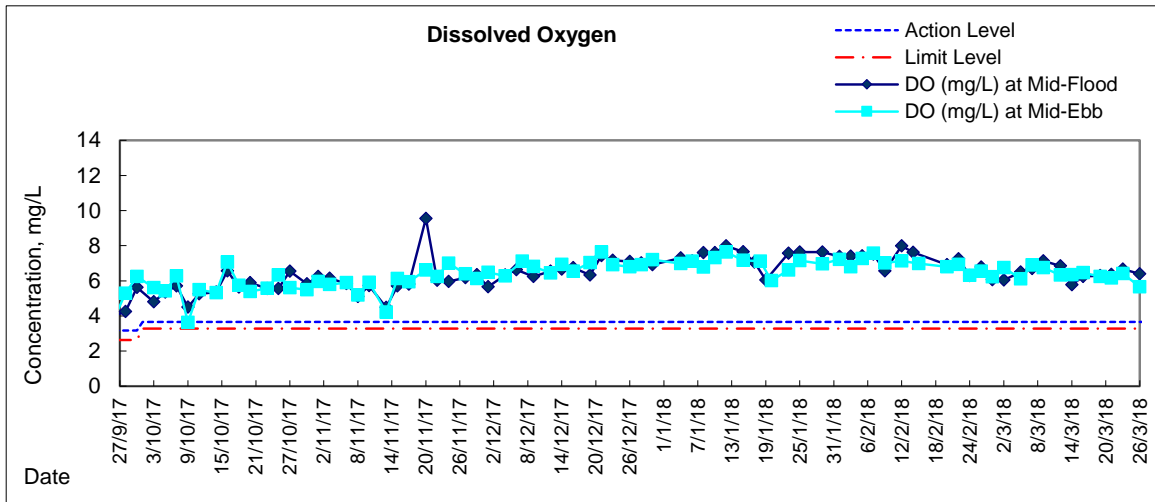


# Graphic Presentation of Water Quality Result of P4 - SOC



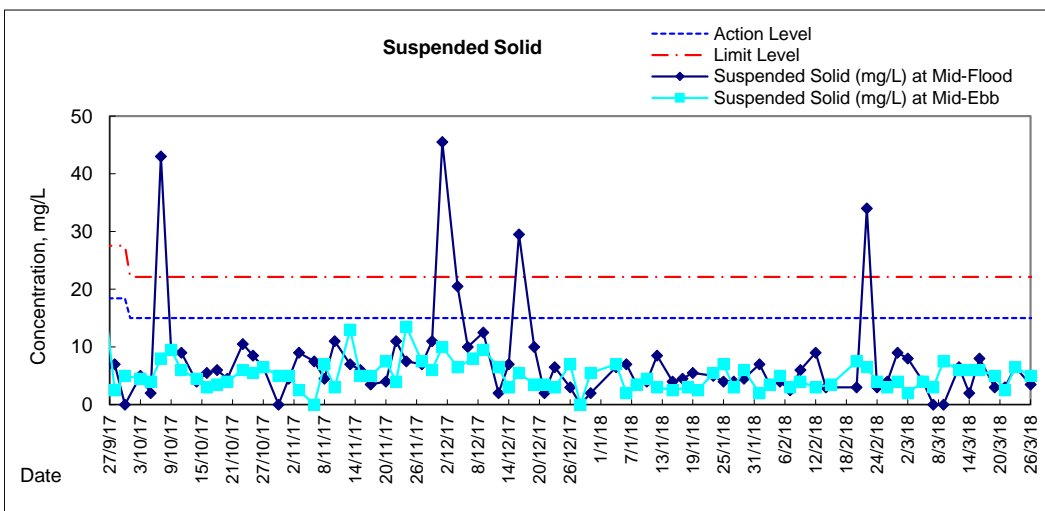
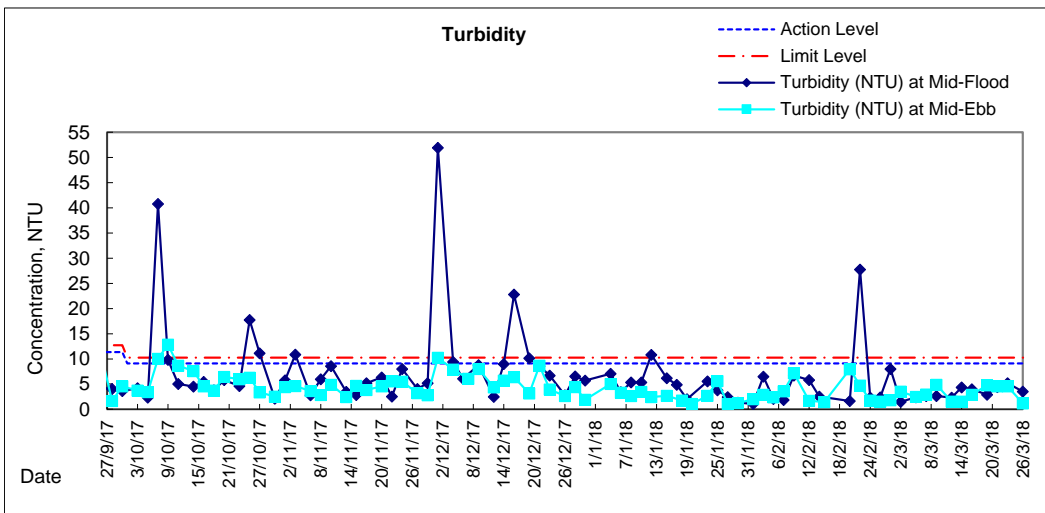
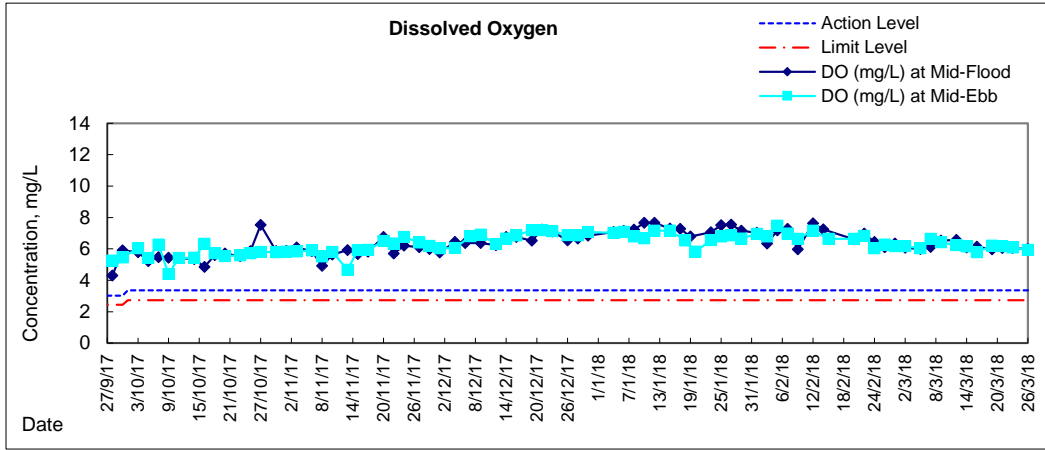


# Graphic Presentation of Water Quality Result of RW21-P789 - GEC/CRC/SHK





# Graphic Presentation of Water Quality Result of C7 - Windsor House







**Water Monitoring Result at C6 - Excelsior Hotel  
Mid-Flood Tide**

Date	Time	Weather Condition	Sampling Depth m	Water Temperature °C			pH			Salinity ppt			DO Saturation %			DO mg/L				
				Value	Average		Value	Average		Value	Average		Value	Average		Value	Average			
28/2/18	15:00	Fine	Surface	1.0	20.10	20.10	20.1	8.03	8.03	8.0	31.59	31.59	31.6	83.1	82.6	82.9	6.23	6.19	6.21	
	-		Middle	-	-	-	-	-	-	-	-	-	-	-	-	-	-	-	-	-
	15:02		Bottom	3.0	19.60	19.60	19.6	8.06	8.06	8.1	31.61	31.61	31.6	89.9	89.9	89.9	6.82	6.82	6.82	
2/3/18	-	Cloudy	Surface	-	-	-	-	-	-	-	-	-	-	-	-	-	-	-	-	
	16:42		Middle	1.0	19.20	19.20	19.2	8.01	8.01	8.0	31.37	31.37	31.4	72.4	71.2	71.8	5.55	5.45	5.50	
	-		Bottom	-	-	-	-	-	-	-	-	-	-	-	-	-	-	-	-	-
5/3/18	8:18	Fine	Surface	1.0	20.00	20.00	20.0	8.08	8.08	8.1	30.95	30.95	31.0	74.0	74.3	74.2	5.59	5.61	5.60	
	-		Middle	-	-	-	-	-	-	-	-	-	-	-	-	-	-	-	-	-
	8:20		Bottom	3.0	19.80	19.80	19.8	8.08	8.08	8.1	30.96	30.96	31.0	77.6	78.1	77.9	5.90	5.94	5.92	



**Water Monitoring Result at C7 - Windsor House  
Mid-Flood Tide**

Date	Time	Weather Condition	Sampling Depth m		Water Temperature °C			pH			Salinity ppt			DO Saturation %			DO mg/L		
					Value	Average	Value	Average	Value	Average	Value	Average	Value	Average	Value	Average			
28/2/18	15:20	Fine	Surface	1.0	19.70	19.70	19.7	8.07	8.07	8.1	30.10	30.10	30.1	72.5	72.8	72.7	5.54	5.56	5.55
	-		Middle	-	-	-	-	-	-	-	-	-	-	-	-	-	-	-	-
	15:22		Bottom	3.0	19.80	19.80	19.8	8.07	8.07	8.1	31.12	31.12	31.1	85.5	85.8	85.7	6.49	6.50	6.50
2/3/18	-	Cloudy	Surface	-	-	-	-	-	-	-	-	-	-	-	-	-	-	-	-
	16:37		Middle	1.0	19.70	19.70	19.7	8.02	8.02	8.0	31.91	31.91	31.9	79.8	80.8	80.3	6.04	6.12	6.08
	-		Bottom	-	-	-	-	-	-	-	-	-	-	-	-	-	-	-	-
5/3/18	8:30	Fine	Surface	1.0	20.50	20.50	20.5	8.01	8.01	8.0	29.54	29.54	29.5	63.1	63.1	63.1	4.77	4.77	4.77
	-		Middle	-	-	-	-	-	-	-	-	-	-	-	-	-	-	-	-
	8:32		Bottom	3.0	19.60	19.60	19.6	8.02	8.02	8.0	30.67	30.67	30.7	75.9	76.6	76.3	5.79	5.84	5.82



**Water Monitoring Result at C6 - Excelsior Hotel  
Mid-Ebb Tide**

Date	Time	Weater Condition	Sampling Depth		Water Temperature			pH			Salinity		DO Saturation		DO				
					°C			-			ppt		%		mg/L				
					Value	Average		Value	Average		Value	Average	Value	Average	Value	Average			
m																			
28/2/18	-	Fine	Surface	-	-	-	-	-	-	-	-	-	-	-	-	-	-	-	-
	0:02		Middle	1.5	20.30	20.30	20.3	7.94	7.92	7.9	31.23	31.23	31.2	63.5	63.9	63.7	4.88	4.91	4.90
	-		Bottom	-	-	-	-	-	-	-	-	-	-	-	-	-	-	-	-
2/3/18	11:55	Fine	Surface	1.0	19.20	19.20	19.2	8.09	8.09	8.1	31.45	31.45	31.5	85.0	85.4	85.2	6.50	6.33	6.42
	-		Middle	-	-	-	-	-	-	-	-	-	-	-	-	-	-	-	-
	11:57		Bottom	3.0	19.00	19.00	19.0	8.09	8.09	8.1	31.46	31.46	31.5	86.8	86.1	86.5	6.68	6.62	6.65
5/3/18	15:55	Fine	Surface	1.0	21.60	21.60	21.6	8.08	8.08	8.1	30.92	30.92	30.9	75.0	75.3	75.2	5.50	5.51	5.51
	-		Middle	-	-	-	-	-	-	-	-	-	-	-	-	-	-	-	-
	15:57		Bottom	3.0	20.80	20.80	20.8	8.07	8.07	8.1	30.97	30.97	31.0	81.9	82.0	82.0	6.10	6.11	6.11

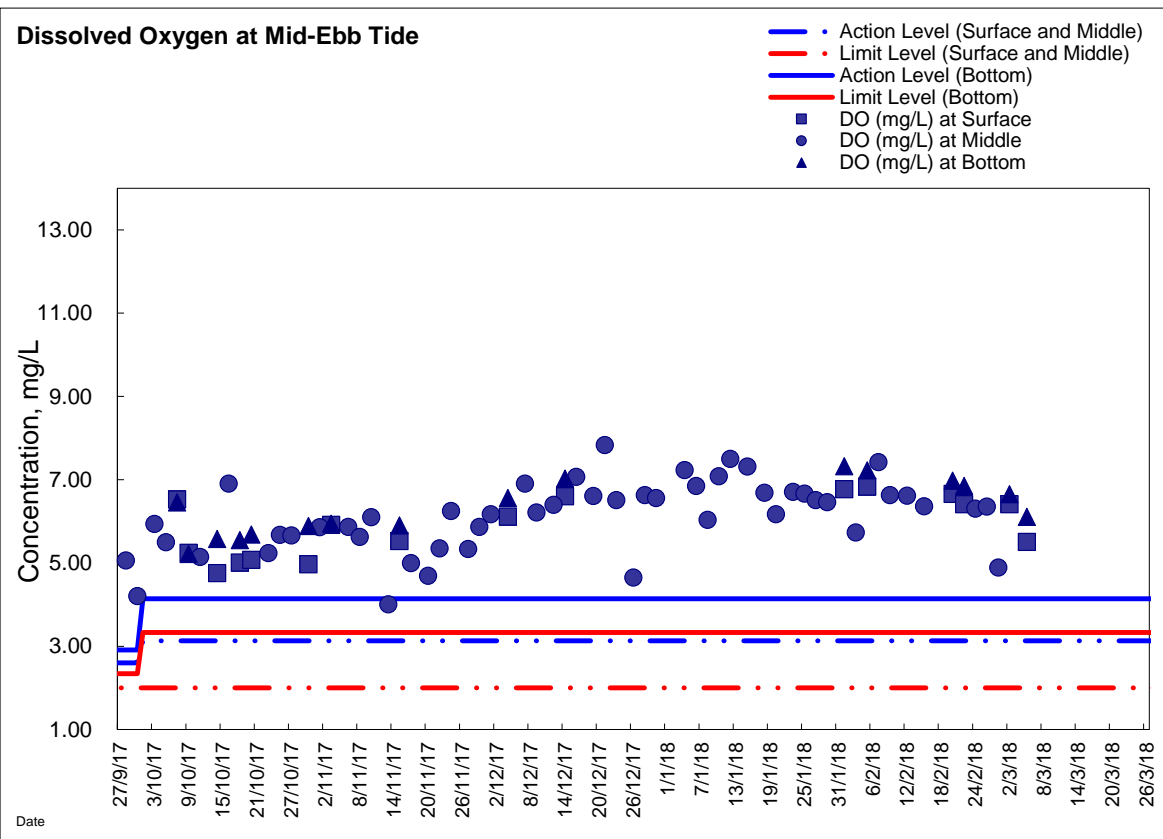
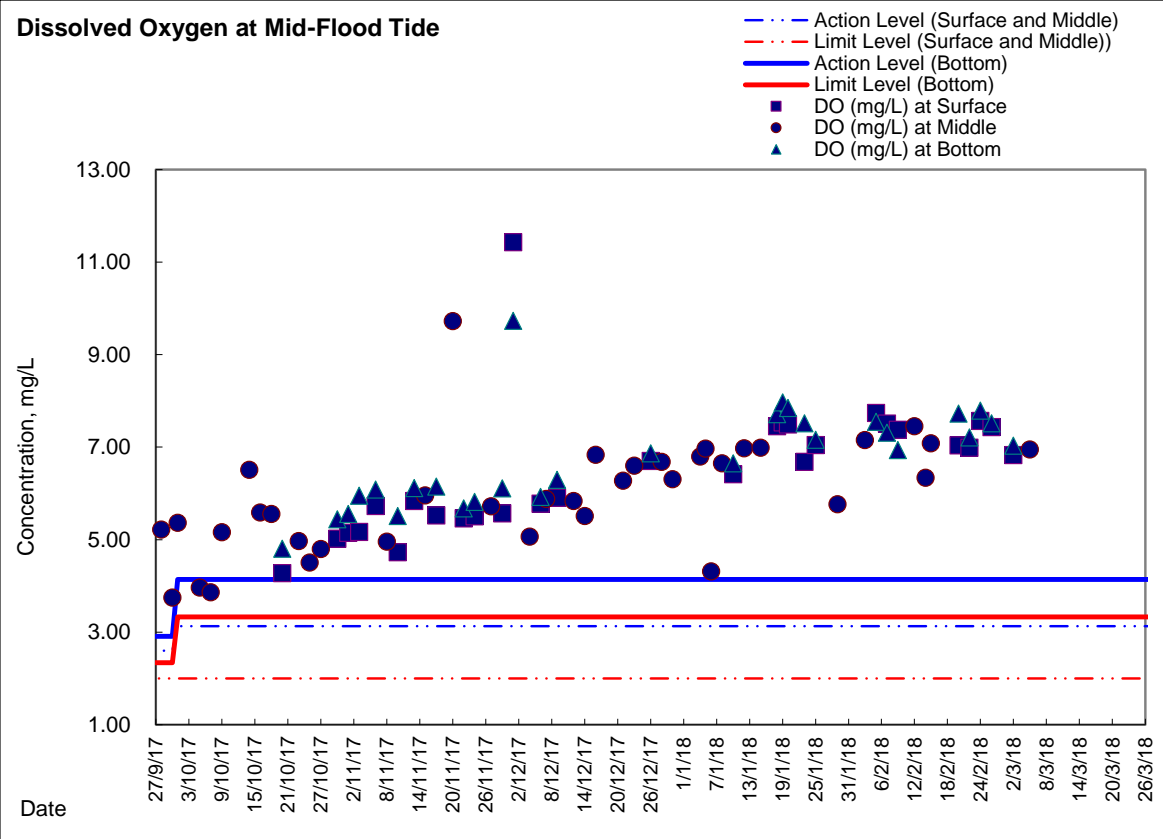


**Water Monitoring Result at C7 - Windsor House  
Mid-Ebb Tide**

Date	Time	Weater Condition	Sampling Depth		Water Temperature			pH			Salinity		DO Saturation		DO				
					°C			-			ppt		%		mg/L				
			m	Value	Average	Value	Average	Value	Average	Value	Average	Value	Average	Value	Average				
28/2/18	-	Fine	Surface	-	-	-	-	-	-	-	-	-	-	-	-	-	-	-	
	23:45		Middle	1.5	20.20	20.30	20.3	8.05	8.05	8.1	32.13	32.13	32.1	81.8	82.3	82.1	6.22	6.25	6.24
	-		Bottom	-	-	-	-	-	-	-	-	-	-	-	-	-	-	-	-
2/3/18	11:50	Fine	Surface	1.0	18.90	18.90	18.9	8.07	8.07	8.1	31.45	31.45	31.5	80.1	79.8	80.0	6.17	6.15	6.16
	-		Middle	-	-	-	-	-	-	-	-	-	-	-	-	-	-	-	-
	11:52		Bottom	3.0	18.80	18.80	18.8	8.08	8.08	8.1	31.53	31.53	31.5	83.0	83.0	83.0	6.30	6.40	6.35
5/3/18	15:40	Fine	Surface	1.0	23.50	23.50	23.5	7.91	7.91	7.9	25.44	25.44	25.4	67.3	67.2	67.3	4.91	4.90	4.91
	-		Middle	-	-	-	-	-	-	-	-	-	-	-	-	-	-	-	
	15:42		Bottom	3.0	21.40	21.40	21.4	7.92	7.92	7.9	29.36	29.36	29.4	81.7	81.9	81.8	6.06	6.06	6.06

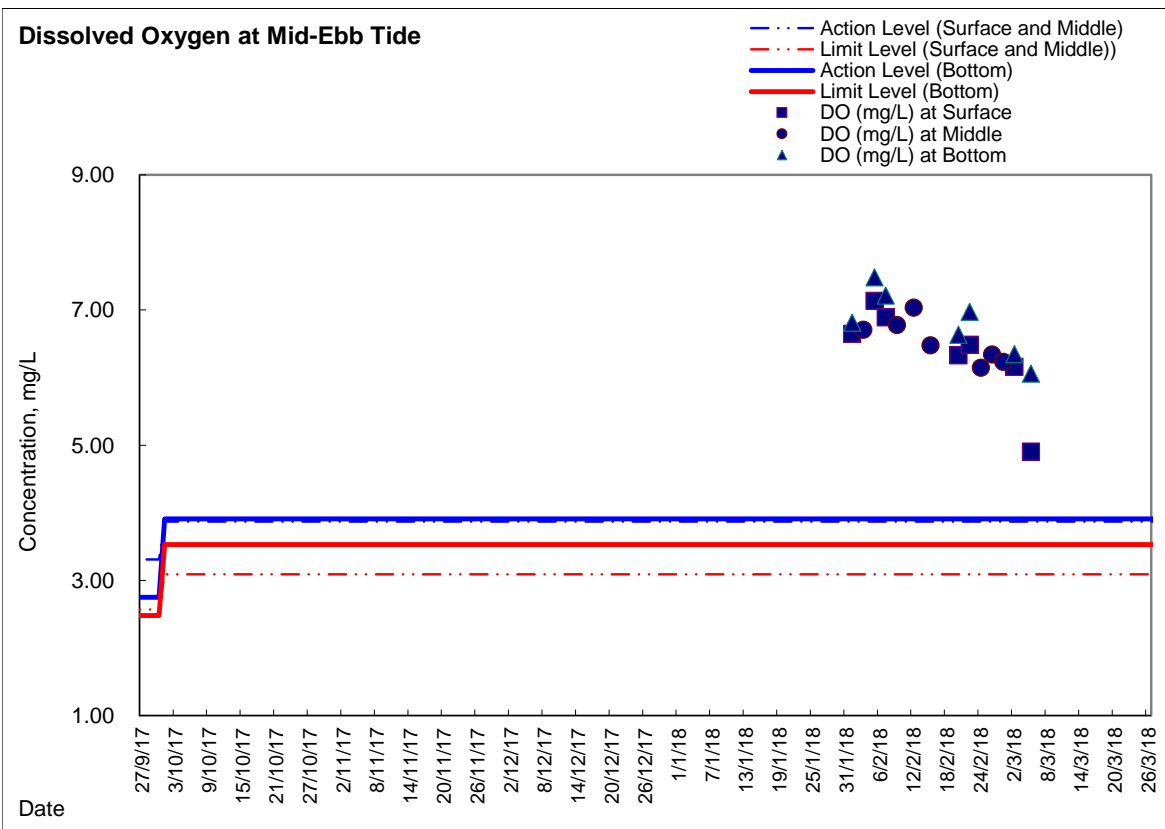
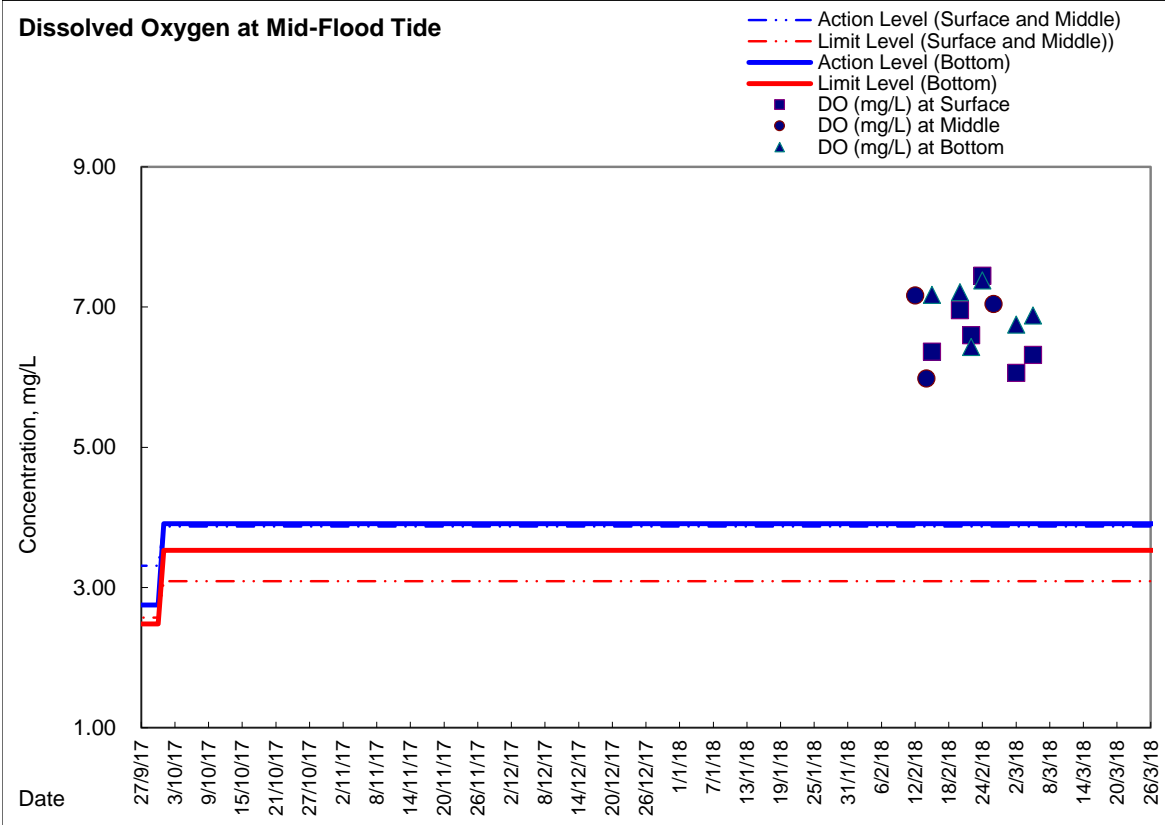


### Graphic Presentation of Enhanced Water Monitoring Results (DO) at C6 - Excelsior Hotel





### Graphic Presentation of Enhanced Water Monitoring Results (DO) at C7 - Windsor House



**Remark:**

Enhanced DO monitoring at Windsor House Cooling (Station Ref: C7) was temporarily suspended since 22 October 2014 with respect to the formation of temporary reclamation zone TS3 and was resumed from 1 February 2018 onwards with respect to the completion of removal of temporary reclamation zone.

With respect to the completion of the removal of the temporary reclamation at TS3 area confirmed by the CWB RSS and the completion of the 4-weeks post construction water quality monitoring at the associated Enhanced DO monitoring stations, the respective Enhance DO monitoring at Monitoring Station C6 and C7 were temporarily suspended from 5 March 2017 ebb tide onwards.